

46 0 / A MODULAR GUARD BOOTH

(4' x 6' ACTUAL SIZE)

OHIO DESIGN CODES

2007 OHIO BUILDING CODE
 2007 OHIO MECHANICAL CODE
 2007 OHIO PLUMBING CODE
 2005 NATIONAL ELECTRICAL CODE

DESIGN LIVE LOADS

FLOOR:..... 50 PSF LIVE LOAD
 10 PSF DEAD LOAD

ROOF:..... 40 PSF LIVE LOAD
 10 PSF DEAD LOAD

CONSTRUCTION TYPE:..... 5B
 OCCUPANCY/USE GROUP: B
 BUILDING AREA:..... 24 SQ FT.
 MINIMUM BUILDING
 SET BACK:..... GREATER THAN 10 FEET TO A
 COMMON OR ASSUMED PROPERTY LINE

SEISMIC ZONE:..... GROUP I, CATEGORY C
 MAXIMUM WIND LOAD:..... 90 MPH, EXPOSURE C
 OCCUPANT LOAD:..... 1

DRAWING INDEX

DRAWING NUMBER	DESCRIPTION
#1	SPECIFICATIONS
#2	ELEVATIONS (GUARDHOUSE PLAN "A")(DOOR ON 4' SIDE)
#3	ELEVATIONS (GUARDHOUSE PLAN "B")(DOOR ON 6' SIDE)
#4	FLOOR / ELECTRICAL PLAN
#5	CROSS SECTION / BLOCKING POINTS PLAN

PLAN B NOT USED

SPECIAL LIMITATIONS:

ADEQUATE HANDICAPPED RESTROOM FACILITIES TO HANDLE THE ADDITIONAL OCCUPANT LOAD CREATED BY THE ADDITION OF THIS BUILDING TO A SITE SHALL BE PROVIDED IN AN ADJACENT BUILDING ON THE SAME PROPERTY. THE LOCAL OFFICIAL HAVING JURISDICTION SHALL VERIFY THE EXISTING FACILITIES.

ACCESSIBILITY EXCEPTIONS:

1103.2.7 Raised areas. Raised areas used primarily for purposes of security, life safety, or fire safety including, but not limited to, observation galleries, prison guard towers, fire towers, or life guard stands are not required to be accessible or to served by an accessible route.

1103.2.10 Single occupant structures. Single occupant structures accessed only by passageways below grade or elevated above grade including, but not limited to, toll booths that are accessed only by underground tunnels, are not required to be accessible

Note: The single occupant guardhouses will be placed on and elevated entrance Island to the park that does not have an accessible route.

TITLE: COVER SHEET	DRAWN BY: R.M.	DATE: 11/13/07	JOB NO: 2007-371
MODEL: 46 0/A GUARD BOOTH	REV:	SCALE: NTS	DRAWING NO: CVR
TWIN MODULAR SERVICES, INC. 1001 LOWER LANDING RD, SUITE 607, BLACKWOOD, NJ 08012			

OPTION NOT ACCEPTED

CHASSIS

TYPE: PERIMETER
 MAIN BEAM: **4" STEEL C CHANNEL 5.4 LBS PER FT**
 CROSS MEMBERS: **4" STEEL C CHANNEL @ 24" OC**
 PAINT: **MARINE BASED EPOXY - BLACK**

FLOOR

INSULATION: NONE
 DECKING: 3/4" PLYWOOD, 24 O.C. SECURED DIRECTLY TO STEEL FRAME
OPTIONAL: 1/4" STEEL PLATE FLOOR W/ NON-SKIP EPOXY PAINT
 COVERING: **1/8" ALUMINUM TREAD PLATE FLOOR**
 TRIM: 4" VINYL COVE BASE
 MOISTURE BARRIER: TYVEK OR EQUAL
 OPTIONAL: 3/16" ALUMINUM DIAMOND PLATE FLOOR

EXTERIOR WALLS

STUDS: 2"x4" STUD GRADE SPF @ 16" O.C.
 BOTTOM PLATE: SINGLE 2"x4" #3 SPF
 TOP PLATE SINGLE 2"x4" #3 SPF
 WALL HEIGHT: 8'-3"
 FINISHED CEILING HT: 7'-8" A.F.F.
 INSULATION: R-13 FIBERGLASS KRAFT-BACKED BATTS
 INT. WALL COVERING: 1/4" VINYL COVERED PANEL (CLASS III)
~~INT. WALL COVERING OPTION: 1/2" VINYL COVERED CYP. (CLASS I)~~

ROOF

TYPE: RAFTER, 2x4 #2 SPF @ 16" O.C.
 CEILING: 2'x4' T-GRID DROP CEILING @ 7'-9" A.F.F.
 INSULATION: R-13 KRAFT FACED FIBERGLASS BATTS
STANDARD 6" OVERHANG ALL SIDES
 OPTIONAL: 2"X8" BOW TYPE ROOF WITH R-30 INSULATION
 AND RIGID R-19 FLOOR INSULATION

ELECTRICAL

MAIN DISTRIBUTION PANEL: **INTERIOR** ~~(WEATHERPROOF)~~ 100 AMP 120/240 VOLT SINGLE PHASE, 3 WIRE, 60 HZ. WITH GROUND
 RACEWAY: MINIMUM #14/2, 90 DEG. C. TYPE MC, COPPER
 INTERIOR LIGHTS: 2'x2' TWO TUBE LAY-IN FLUORESCENT TROFFER PER PRINT
 EXTERIOR LIGHTS: 150 WATT QUARTZ HALOGEN SECURITY LIGHT (WEATHERPROOF)
 SWITCHES: 120 V. 15 AMP SINGLE POLE PER PRINT
 RECEPTACLES: 120 V. 15 AMP DUPLEX RECEPTS PER PRINT
 OPTIONAL: ADDITIONAL 110V DUPLEX RECEPTS

H.V.A.C.

HEATING: **1500 WATT WALL MOUNT HEATER WITH FAN 208/240V DEDICATED CIRCUIT**
 AIR CONDITIONING: 110V, **8000** BTU WALL MOUNT, DEDICATED CIRCUIT
~~OPTION: THERMOSTAT CONTROL OF A/C & B.B. HEATER~~
OPTION: 11600 BTU AIR CONTITIONING / HEAT COMBO UNIT, WALL MOUNTED

EXTERIOR WINDOWS & DOORS

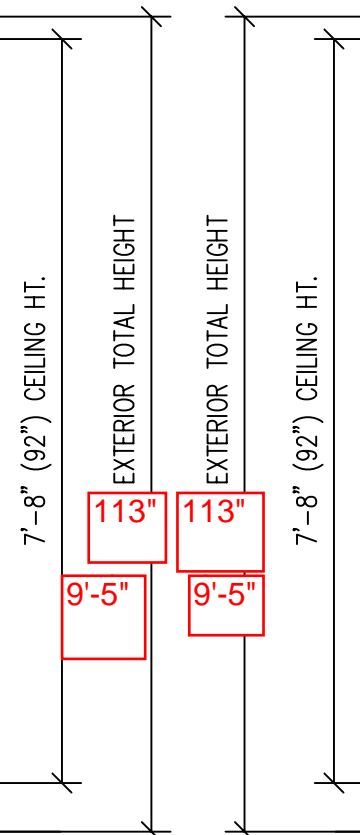
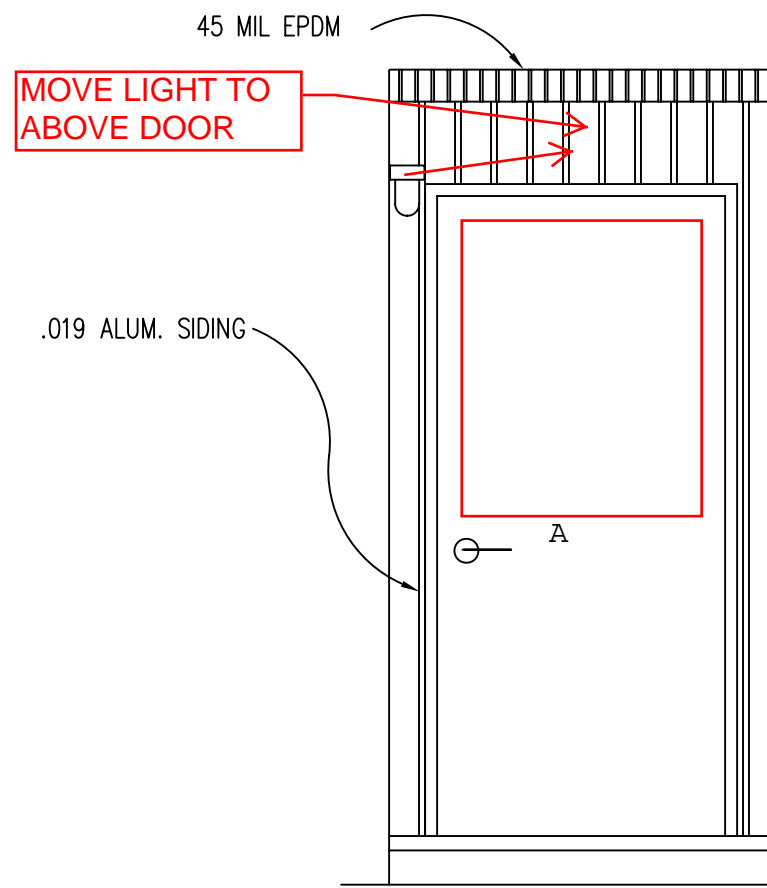
DOORS: ~~36"x80" ALUM. DOOR, ALUM. FRAME, FOAM INSULATED W/ 14"x14" S.C., LEVER PASSAGE HARDWARE~~
STANDARD 36"x80" STEEL DOOR W/ 22"X36" WINDOW (S.G.), CLOSER

WINDOWS: ~~36"x39" HORIZONTAL SLIDER, ALUM. MILL FRAME, SINGLE GLAZE~~
~~36"x39" CLEAR TEMPERED GLASS HORIZONTAL SLIDER, ALUM. MILL FRAME~~
OPTION: 2 36"x39" HORIZONTAL SLIDER, VINYL THERMAL INSULATED WINDOWS ← (3) WINDOWS TOTAL
~~OPTION: 24"x36" CLEAR TEMPERED GLASS TICKET WINDOW WITH STAINLESS STEEL SHELF, SPEAK-THRU & 1/2 ROUND TICKET SERVICE~~
OPTION: 1 36"x39" PICTURE WINDOW - NON OPERABLE, VINYL THERMAL INSULATED OR SINGLE GLAZED MILL FINISH FRAMES

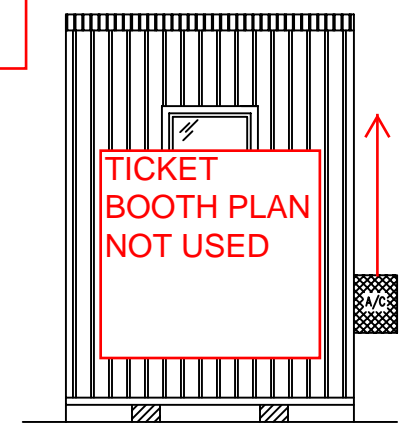
EXTERIOR FINISHES

SIDING: .019 ALUMINUM LIGHT GRAY
 TRIM: .019 ALUMINUM DARK GRAY
 WALL SHEATHING: 7/16" OSB OR CDX PLYWOOD, 16/0 SPAN INDEX RATING
 ROOF SHEATHING: 1/2" CDX PLYWOOD, 16/0 SPAN RATING
 ROOF: .45 EPDM RUBBER ROOFING
 WINDOW AND DOOR TRIM: 3/4" X 2 1/2" VINYL - WHITE
 FURNISHINGS
 COUNTER TOP - WHITE MICA

TITLE: SPECIFICATIONS	DATE: 11/14/07	JOB NO: 2007-371
MODEL: 46 O/A GUARD BOOTH	SCALE: NTS	DRAWING NO: 1
TWIN MODULAR SERVICES, INC. 1001 LOWER LANDING RD, SUITE 607, BLACKWOOD, NJ 08012		
DRAWN BY: R.M.		
REV:		



6" OVERHANG ALL SIDES



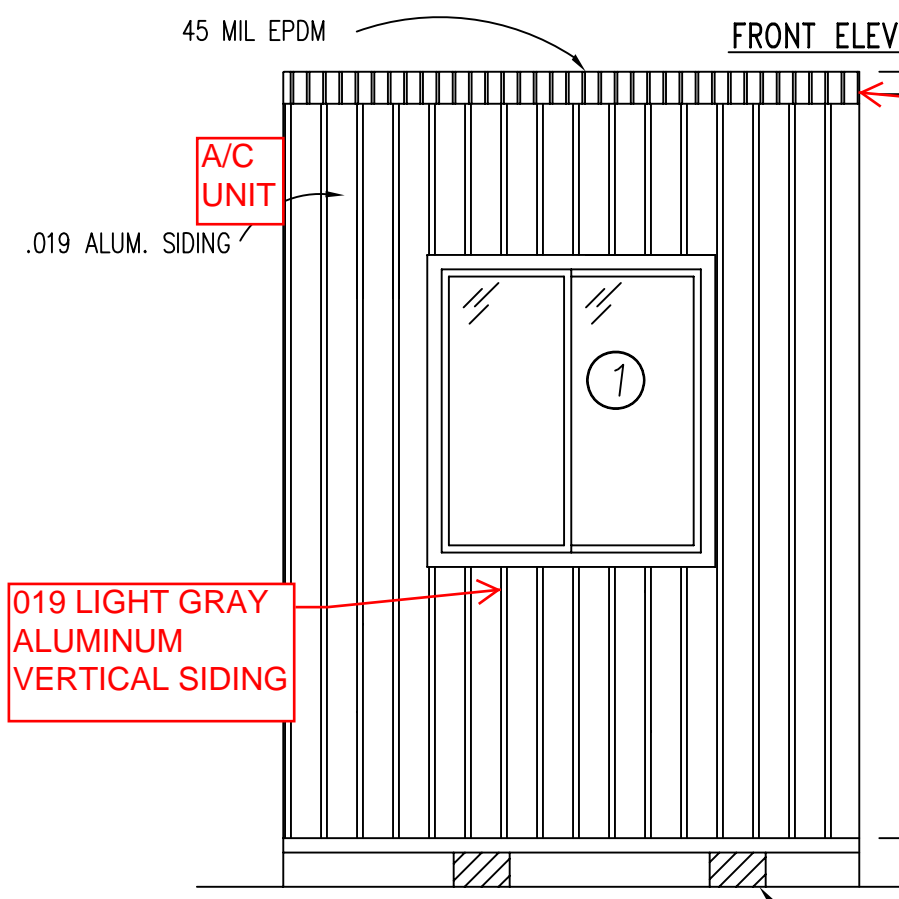
OPTIONAL TICKET WINDOW ELEVATION
NOT TO SCALE

DOOR AND WINDOW SCHEDULE

- Ⓐ 36" X 80" STEEL DOOR WITH 22" X 36" VISION, CLOSURE AND LOCKSET
- ① (3) HORIZONTAL SLIDING VINYL THERMAL INSULATED WINDOW DIG TEMPERED
- ②

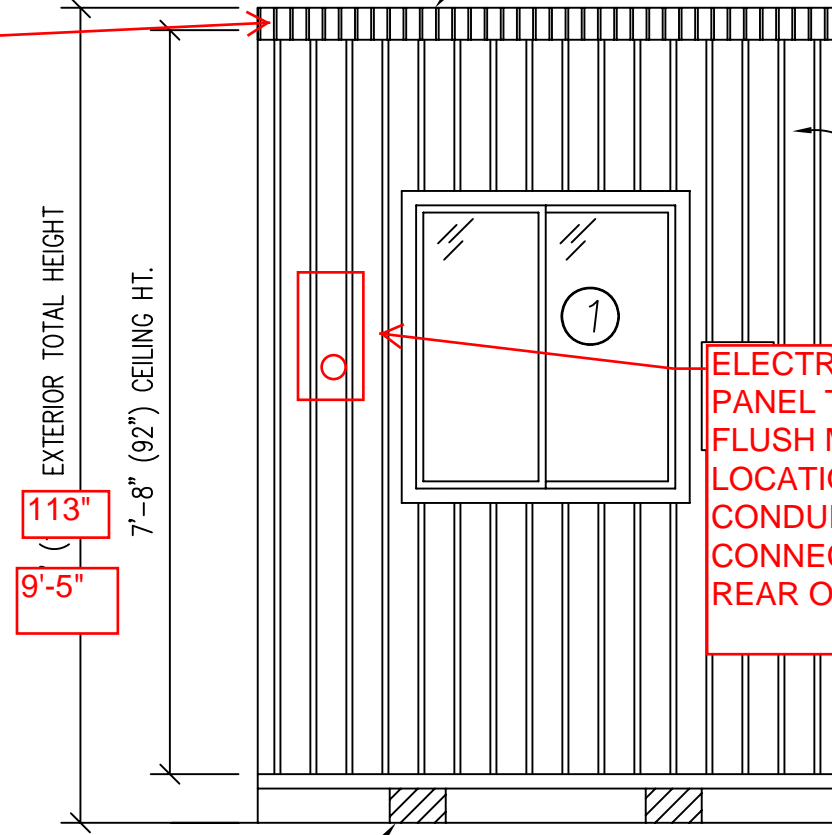
FRONT ELEVATION

REAR ELEVATION



6" OVERHANG ALL SIDES

019 LIGHT GRAY ALUMINUM VERTICAL SIDING

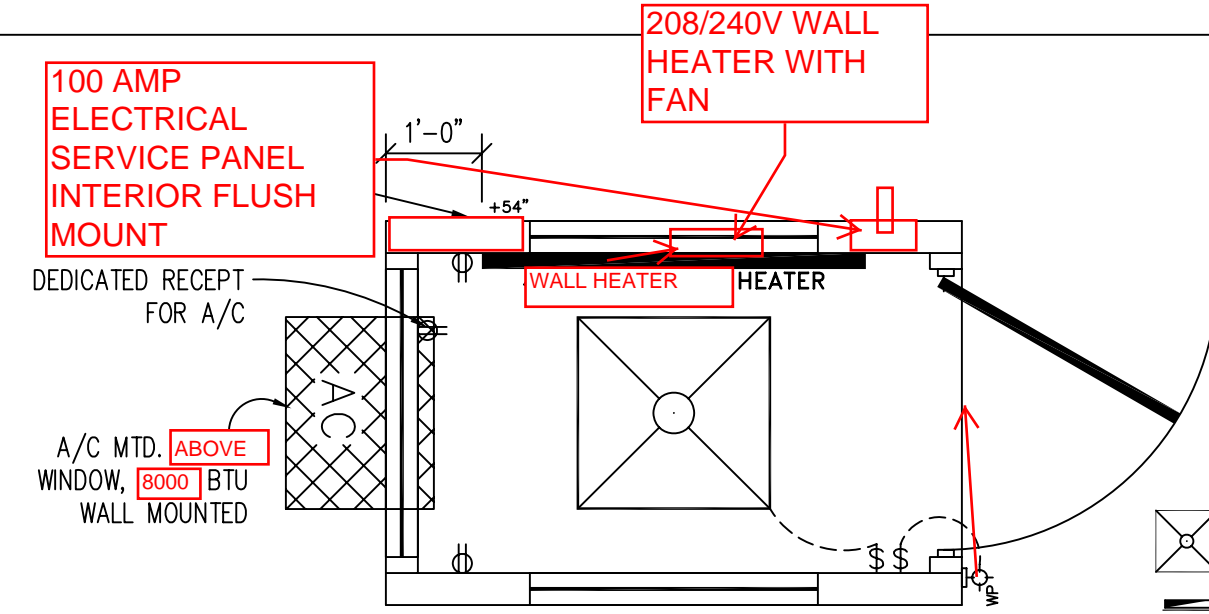


ELECTRIC SERVICE PANEL TO INTERIOR FLUSH MOUNT SAME LOCATION. 1 1/2" CONDUIT CONNECTION TO REAR OF PANEL

CURB SIDE ELEVATION 7" x 3" FORK SLOTS, 32" O.C.

ROAD SIDE ELEVATION 7" x 3" FORK SLOTS, 32" O.C.

TITLE:	ELEVATIONS (PLAN "A")	DRAWN BY:	R.M.	TWIN MODULAR SERVICES, INC.	DATE:	11/14/07	JOB NO:	2007-371
MODEL:	46 O/A GUARD BOOTH	REV:		1001 LOWER LANDING RD, SUITE 607, BLACKWOOD, NJ 08012	SCALE:	1/4"=1'-0"	DRAWING NO:	2

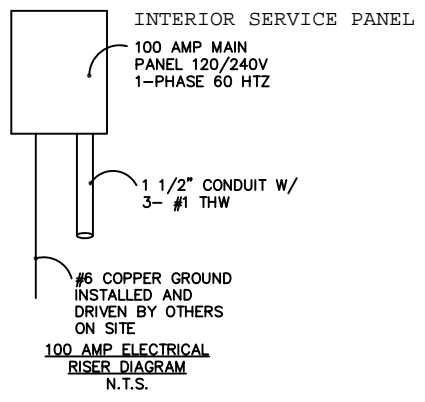


GUARDHOUSE PLAN "A"

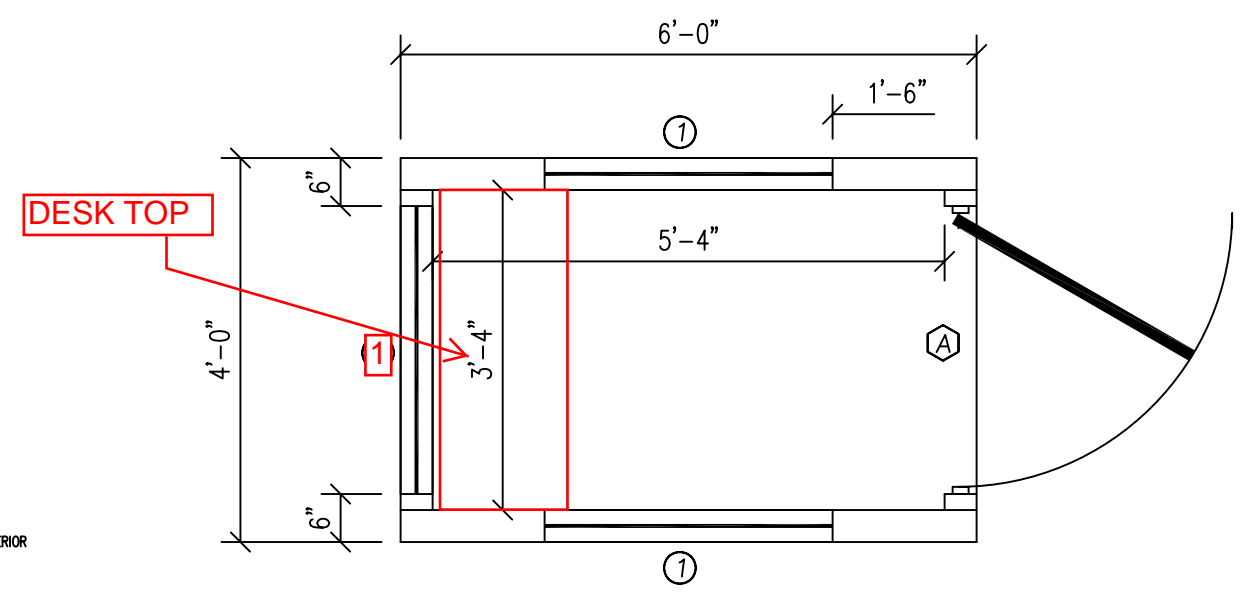
**CAPACITIES OF INSULATED CONDUCTORS
90°C WIRE COPPER**

AWG	MAXIMUM AMPACITY
14	15 AMP
12	20 AMP
10	30 AMP
8	50 AMP
6	65 AMP
4	85 AMP
3	100 AMP
2	115 AMP
1	130 AMP

- ELECTRICAL LEGEND**
- 2'x2' (2) TUBE DROP-IN FLUORESCENT LIGHT
 - 100A 120/240V MAIN PANEL, SURFACE MOUNTED EXTERIOR
 - 15A 110V SINGLE POLE TOGGLE SWITCH +48"
 - 15A 120V DUPLEX RECEPTACLE (RECEPTS AT +34" UNLESS NOTED)
 - 150 WATT QUARTZ HALOGEN SECURITY LIGHT, WEATHERPROOF
 - WALL HEATER WITH FAN

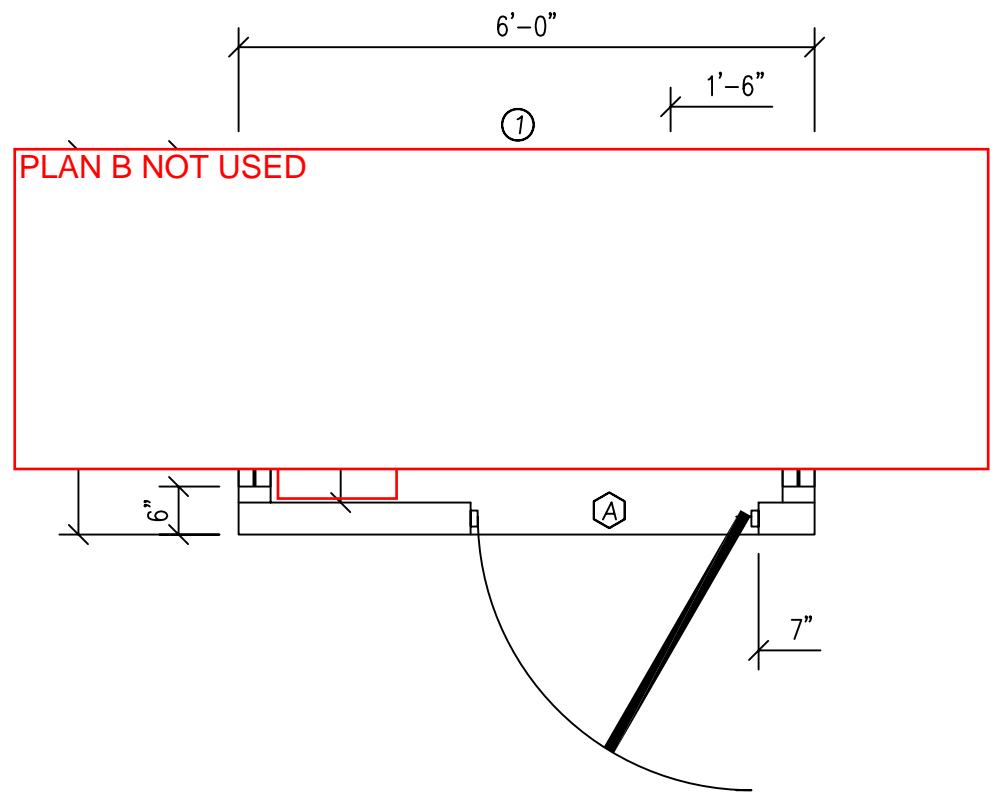


- ELECTRICAL**
- ALL RECEPTACLES TO BE GROUNDING TYPE.
 - ALL WIRING TO BE PER THE EDITION OF THE NEC LISTED ON THE COVER PAGE, TYPE NM ROMEX (CU) W/ GROUND.
 - MAIN PANEL TO BE MARKED "SUITABLE FOR USE AS SERVICE EQUIPMENT", AND BE EQUIPPED W/ BREAKER/FUSE TYPE OVERCURRENT PROTECTION.
 - PROPER THERMAL OVERLOAD PROTECTION TO BE PROVIDED FOR ALL MOTORS.
 - DISCONNECTING MEANS WITHIN SIGHT REQUIRED FOR ALL MOTORS.
 - WEATHERPROOF PROTECTION REQUIRED FOR ALL OUTDOOR LIGHTS, RECEPTACLES AND DISCONNECTS.
 - PROPER WORKING CLEARANCES TO BE PROVIDED AND MAINTAINED ABOUT ALL ELECTRICAL EQUIPMENT.
 - ALL FLUORESCENT FIXTURES REQUIRE THERMAL PROTECTION AND PROPER CLEARANCES FROM INSULATION, ALSO APPLICABLE FOR INCANDESCENT FIXTURES.
 - COMBINATION EXHAUST FAN/LIGHT AND ALL RECESSED INCANDESCENT FIXTURES TO BE WITH THERMAL PROTECTION.
 - EXIT LIGHTS (IF ELECTRIC) MUST BE FED FROM AN APPROVED EMERGENCY SERVICE CONNECTED AHEAD OF, BUT NOT WITHIN MAIN SERVICE DISCONNECTION MEANS ENCLOSURE, AND INSTALLED AS PER SERVICE REQUIREMENTS, OR BE BATTERY BACKUP TYPE UNITS.
 - SERVICE CONDUCTORS, LOCATED WITHIN THE PERIMETER OF THE BUILDING, SHALL BE INSTALLED IN ACCORDANCE WITH ARTICLE 230-6, PER THE EDITION OF THE NEC LISTED ON THE COVER PAGE.
 - MAXIMUM 15 (2) TUBE FLOURESCENT LIGHTS ON 15A CIRCUIT, MAXIMUM 10 RECEPTS ON 15A CIRCUIT, MAXIMUM 7 (4) TUBE FLOURESCENT LIGHTS ON 15A CIRCUIT.
 - MAXIMUM 20 (2) TUBE FLOURESCENT LIGHTS ON 20A CIRCUIT, MAXIMUM 13 RECEPTS ON 20A CIRCUIT, MAXIMUM 10 (4) TUBE FLOURESCENT LIGHTS ON 20A CIRCUIT.

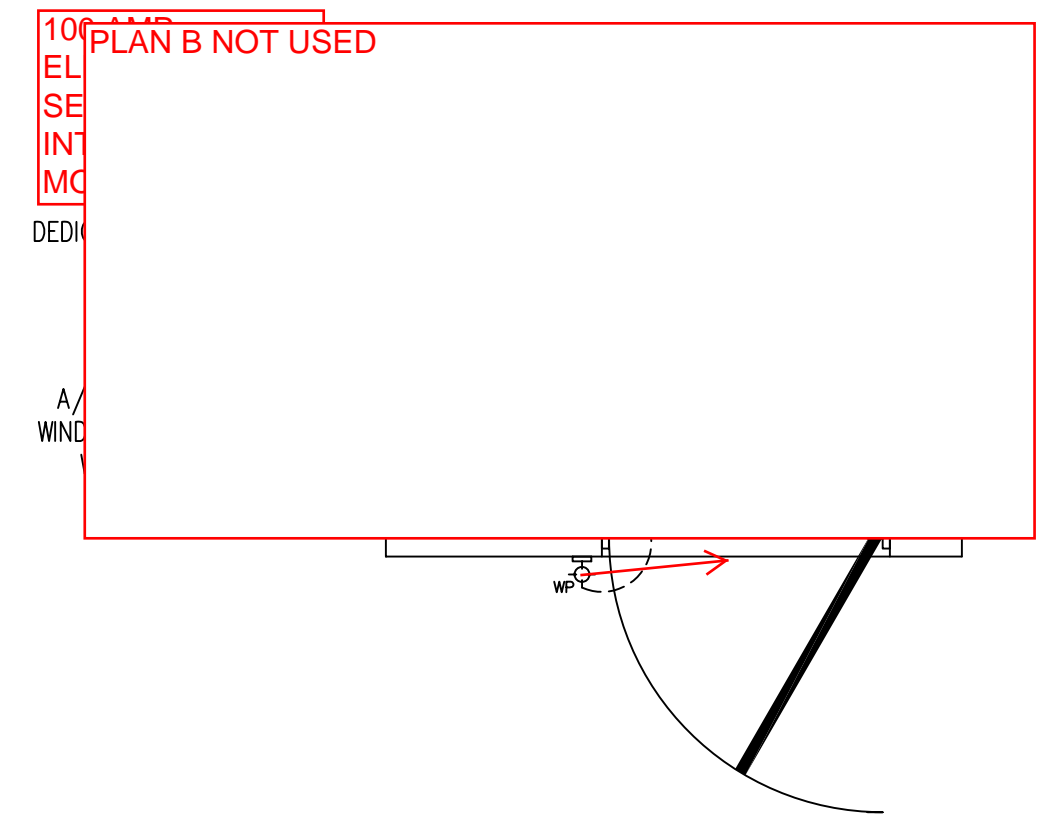


GUARDHOUSE PLAN "A"

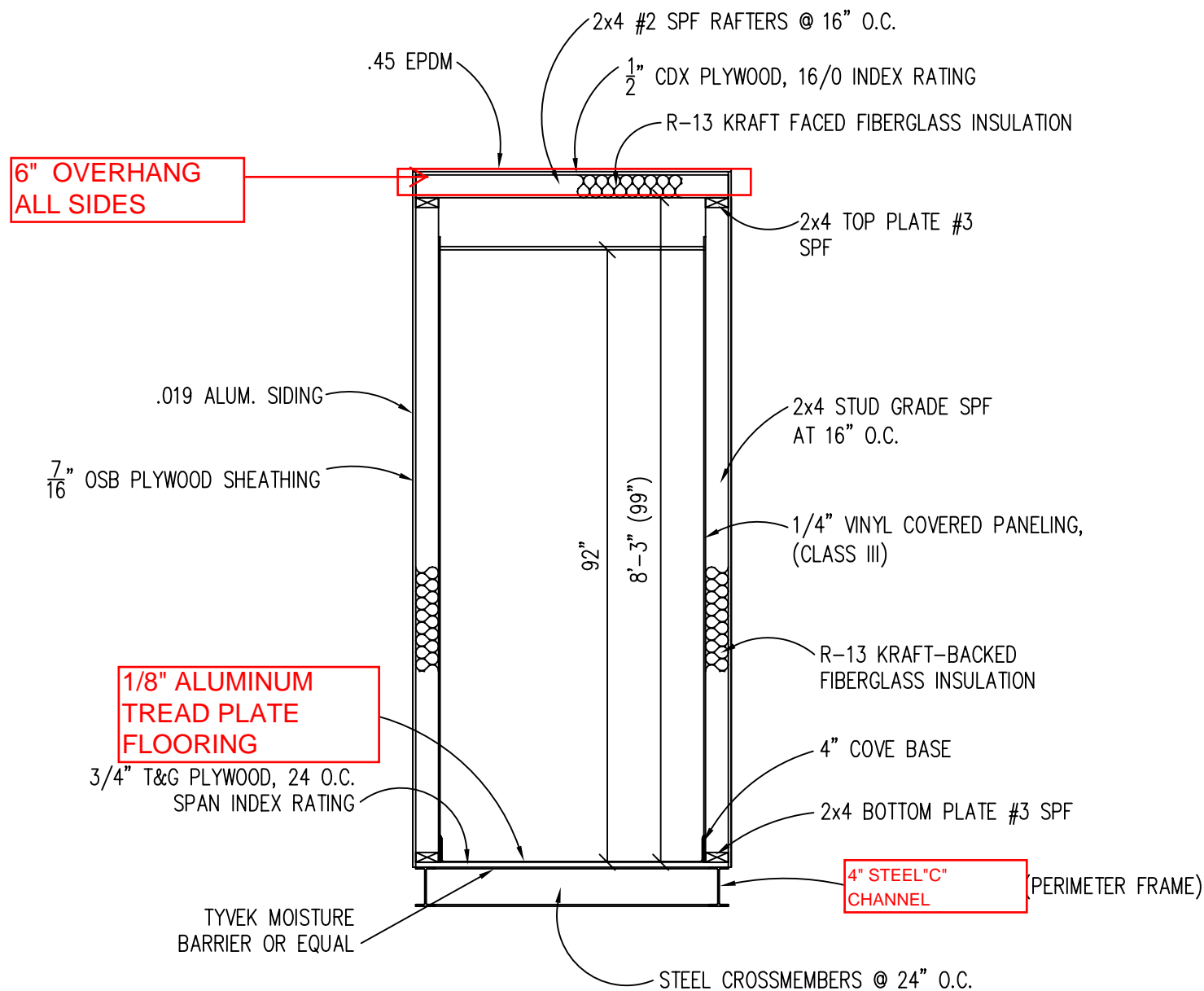
- DOOR AND WINDOW SCHEDULE**
- 36" X 80" STEEL DOOR WITH 22" X 36" VISION, CLOSURE AND LOCKSET
 - (3) HORIZONTAL SLIDING VINYL THERMAL INSULATED WINDOW DIG TEMPERED



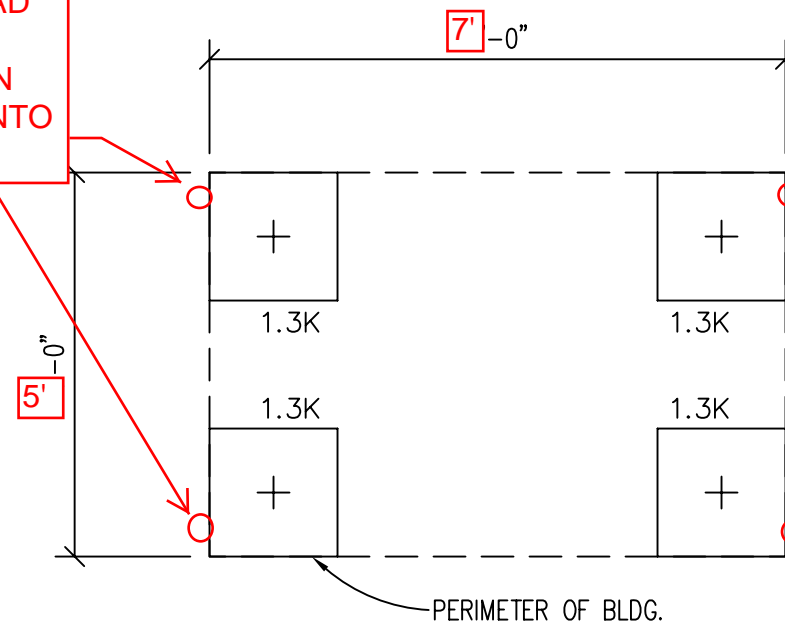
GUARDHOUSE PLAN "B"



GUARDHOUSE PLAN "B"



4 CONCRETE RED HEAD TYPE ANCHORS THROUGH 3/4" HOLE IN STEEL "C" CHANNEL INTO CONCRETE SLAB



FOUNDATION AND TIE-DOWN DESIGN BY OTHERS

CONCRETE SLAB TYPE FOUNDATION 7'-0" X 5'-0". TIE-DOWN WITH (4) CONCRETE WEDGE ANCHORS THROUGH STEEL "C" CHANNEL INTO CONCRETE. WEDGE ANCHORS ARE RED HEAD TYPE 1/2" X 4" #11285

DESIGN LOADS

FLOOR LIVE LOAD	= 50 PSF
FLOOR DEAD LOAD	= 10 PSF
ROOF LIVE LOAD	= 40 PSF
ROOF DEAD LOAD	= 10 PSF
EXTERIOR WALL DEAD LOAD	= 42 PLF

FOUNDATION LEGEND

- INDICATES BLOCKING TO BOTTOM OF MAIN I-BEAM
- INDICATES BLOCKING TO BOTTOM OF COLUMN
- INDICATES MINUTE-MAN OR EQUAL FRAME TIE-DOWN LOCATION AND DIRECTION

FOUNDATION

1. THE PIER LOCATIONS SHOWN ON THIS PLAN ARE FOR THE PURPOSE OF IDENTIFYING THE LOCATION OF THE REQUIRED BLOCKING POINTS AND THE LOADS APPLIED AT EACH POINT FOR THIS BUILDING. FOUNDATION REQUIREMENTS ARE NOT KNOWN DUE TO VARYING SOIL CONDITIONS.
2. FOUNDATION DESIGN IS BY OTHERS. FOUNDATION REVIEW AND APPROVAL IS TO BE PERFORMED BY THE LOCAL OFFICIAL HAVING JURISDICTION.
3. CRAWL SPACE TO BE VENTILATED AT 1 SQ. FT. PER EACH 150 SQ. FT. OF CRAWL SPACE AREA TO BE VENTILATED.
4. PROVIDE POSITIVE DRAINAGE UNDER UNIT.
5. PROVIDE MINIMUM CRAWL SPACE ACCESS OF 22" x 24".
6. PIER LOADS ARE SHOWN IN KIPS

BUILDING CODE

1. ATTIC VENTILATION SHALL NOT BE LESS THAN 1/150th OF THE HORIZONTAL AREA TO BE VENTILATED.
2. THE BUILDING EXTERIOR AND ALL FACILITIES WITHIN THE BUILDING SHALL BE IDENTIFIED WITH THE INTERNATIONAL SYMBOL OF ACCESSIBILITY.
3. OWNER/BUYER SHALL BE RESPONSIBLE FOR ON SITE BARRIER FREE PROVISIONS: STEPS, RAMPS, PARKING SIGNS, ETC. - BUILDING APPROACH (WALK OR RAMP) WITH A MINIMUM WIDTH OF 5' AND A GRADIENT OF NOT MORE THAN 1 FOOT IN 20 FEET.
4. ALL LOCKS TO BE UNLOCKABLE FROM THE INTERIOR WITHOUT THE USE OF A KEY OR SPECIAL KNOWLEDGE.
5. CORROSION RESISTANT FLASHING AT TOP AND SIDES OF DOORS, WINDOWS AND AT ROOF PENETRATIONS.
6. ALL GLAZING WITHIN 24" OF EXTERIOR PASSAGE DOORS AND IN PASSAGE DOORS, OR WITHIN 18" OF FLOOR TO BE "SAFETY GLAZED" AND SO MARKED.

TITLE: BLOCKING POINTS PLAN CROSS SECTION	DATE: 11/14/07	JOB NO: 2007-371
MODEL: 46 0/A GUARD BOOTH	SCALE: 1/4"=1'-0"	DRAWING NO: 5
DRAWN BY: R.M.	TWIN MODULAR SERVICES, INC.	
REV:	1001 LOWER LANDING RD, SUITE 607, BLACKWOOD, NJ 08012	