

88 0 / A MODULAR GUARD BOOTH

(8' x 8' ACTUAL SIZE)

OHIO DESIGN CODES

2007 OHIO BUILDING CODE
 2007 OHIO MECHANICAL CODE
 2007 OHIO PLUMBING CODE
 2005 NATIONAL ELECTRICAL CODE

DESIGN LIVE LOADS

FLOOR:..... 50 PSF LIVE LOAD
 10 PSF DEAD LOAD

ROOF:..... 40 PSF LIVE LOAD
 10 PSF DEAD LOAD

CONSTRUCTION TYPE:..... 5B
 OCCUPANCY/USE GROUP: B
 BUILDING AREA:..... 64 SQ FT.
 MINIMUM BUILDING
 SET BACK:..... GREATER THAN 10 FEET TO A
 COMMON OR ASSUMED PROPERTY LINE

SEISMIC ZONE:..... GROUP I, CATEGORY C
 MAXIMUM WIND LOAD:..... 90 MPH, EXPOSURE C
 OCCUPANT LOAD:..... 1

DRAWING INDEX

DRAWING NUMBER	DESCRIPTION
#1	SPECIFICATIONS
#2	ELEVATIONS
#3	FLOOR / ELECTRICAL PLAN
#4	CROSS SECTION / BLOCKING POINTS PLAN

SPECIAL LIMITATIONS:

ADEQUATE HANDICAPPED RESTROOM FACILITIES TO HANDLE THE ADDITIONAL OCCUPANT LOAD CREATED BY THE ADDITION OF THIS BUILDING TO A SITE SHALL BE PROVIDED IN AN ADJACENT BUILDING ON THE SAME PROPERTY. THE LOCAL OFFICIAL HAVING JURISDICTION SHALL VERIFY THE EXISTING FACILITIES.

TITLE: COVER SHEET	DRAWN BY: R.M.	DATE: 11/15/07	JOB NO: 2007-372
MODEL: 88 0/A GUARD BOOTH	REV:	SCALE: NTS	DRAWING NO: CVR
TWIN MODULAR SERVICES, INC. 1001 LOWER LANDING RD, SUITE 607, BLACKWOOD, NJ 08012			

CHASSIS

TYPE: PERIMETER
MAIN BEAM: 6" JR. I-BEAM
CROSS MEMBERS: 6" JR. I-BEAM @ 24" O.C.
PAINT: ASPHALT BASED

FLOOR

INSULATION: NONE
MOISTURE BARRIER: TYVEK OR EQUAL
DECKING: 3/4" PLYWOOD, 24 O.C. SECURED DIRECTLY TO STEEL FRAME
OPTIONAL: 1/4" STEEL PLATE FLOOR W/ NON-SKIP EPOXY PAINT
COVERING: 1/8"x12"x12" VINYL TILE
TRIM: 4" VINYL COVE BASE

EXTERIOR WALLS

STUDS: 2"x4" STUD GRADE SPF @ 16" O.C.
BOTTOM PLATE: SINGLE 2"x4" #3 SPF
TOP PLATE SINGLE 2"x4" #3 SPF
WALL HEIGHT: 8'-3"
FINISHED CEILING HT: 7'-8" A.F.F.
INSULATION: R-13 FIBERGLASS KRAFT-BACKED BATTS
INT. WALL COVERING: 1/4" VINYL COVERED PANEL (CLASS III)
INT. WALL COVERING OPTION: 1/2" VINYL COVERED GYP. (CLASS I)

ROOF

TYPE: RAFTER, 2x6 #2 SPF @ 16" O.C.
CEILING: 2'x4' T-GRID DROP CEILING @ 7'-8" A.F.F.
INSULATION: R-13 KRAFT FACED FIBERGLASS BATTS
OPTIONAL: 6" OVERHANG ALL SIDES

ELECTRICAL

MAIN DISTRIBUTION PANEL: EXTERIOR (WEATHERPROOF) 100 AMP 120/240 VOLT SINGLE PHASE, 3 WIRE, 60 HZ. WITH GROUND
RACEWAY: MINIMUM #14/2 W/ GROUND 90 DEG. C. TYPE MC, COPPER
INTERIOR LIGHTS: 2'x4' TWO TUBE LAY-IN FLUORESCENT TROFFER PER PRINT
EXTERIOR LIGHTS: 150 WATT QUARTZ HALOGEN SECURITY LIGHT (WEATHERPROOF)
SWITCHES: 120 V. 15 AMP SINGLE POLE PER PRINT
RECEPTACLES: 120 V. 15 AMP DUPLEX RECEPES PER PRINT

H.V.A.C.

HEATING: 220V, 20 AMP, 6' ELEC. BASEBOARD HEATER, DEDICATED CIRCUIT
AIR CONDITIONING: 110V, DEDICATED CIRCUIT, 8000 BTU WALL MOUNT
OPTION: HEAT / AIR CONDITIONER COMBINATION UNIT, WALL MOUNTED

EXTERIOR WINDOWS & DOORS

DOORS: 36"x80" ALUM. DOOR, ALUM. FRAME, FOAM INSULATED W/ 14"x14" S.G., LEVER PASSAGE HARDWARE
OPTION: 36"x80" STEEL DOOR W/ 22"x30" WINDOW (S.G.), CLOSER

WINDOWS: 36"x39" HORIZONTAL SLIDER, ALUM. MILL FRAME, SINGLE GLAZE
36"x39" CLEAR TEMPERED GLASS - HORIZONTAL SLIDER, ALUM. MILL FRAME
OPTION: 36"x39" HORIZONTAL SLIDER, VINYL THERMAL INSULATED WINDOWS
OPTION: 36"x39" FIXED WINDOW, VINYL THERMAL INSULATED OR SINGLE GLAZED W/ MILL FINISH FRAME
OPTION: 24"x36" CLEAR TEMPERED GLASS TICKET WINDOW WITH STAINLESS STEEL SHELF, SPEAK-THRU & 1/2 ROUND TICKET SERVICE

EXTERIOR FINISHES

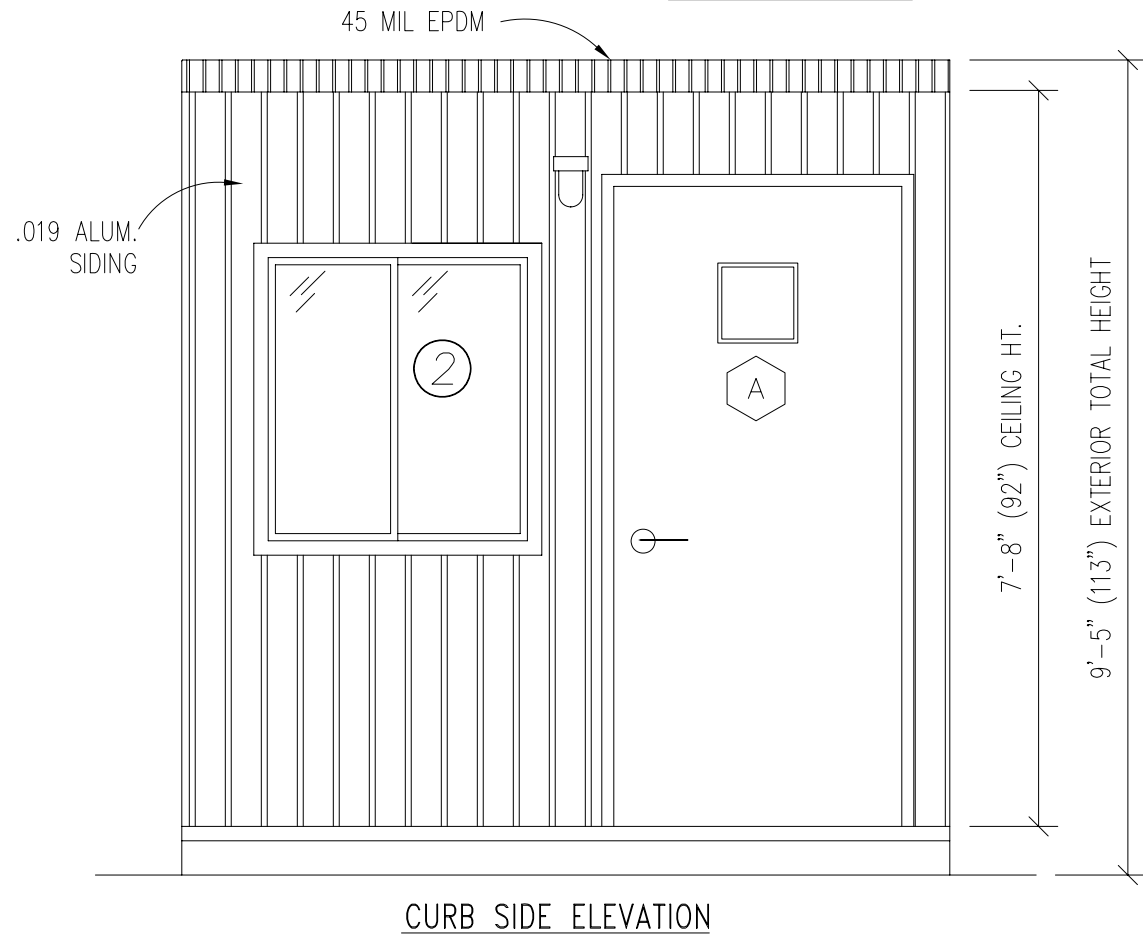
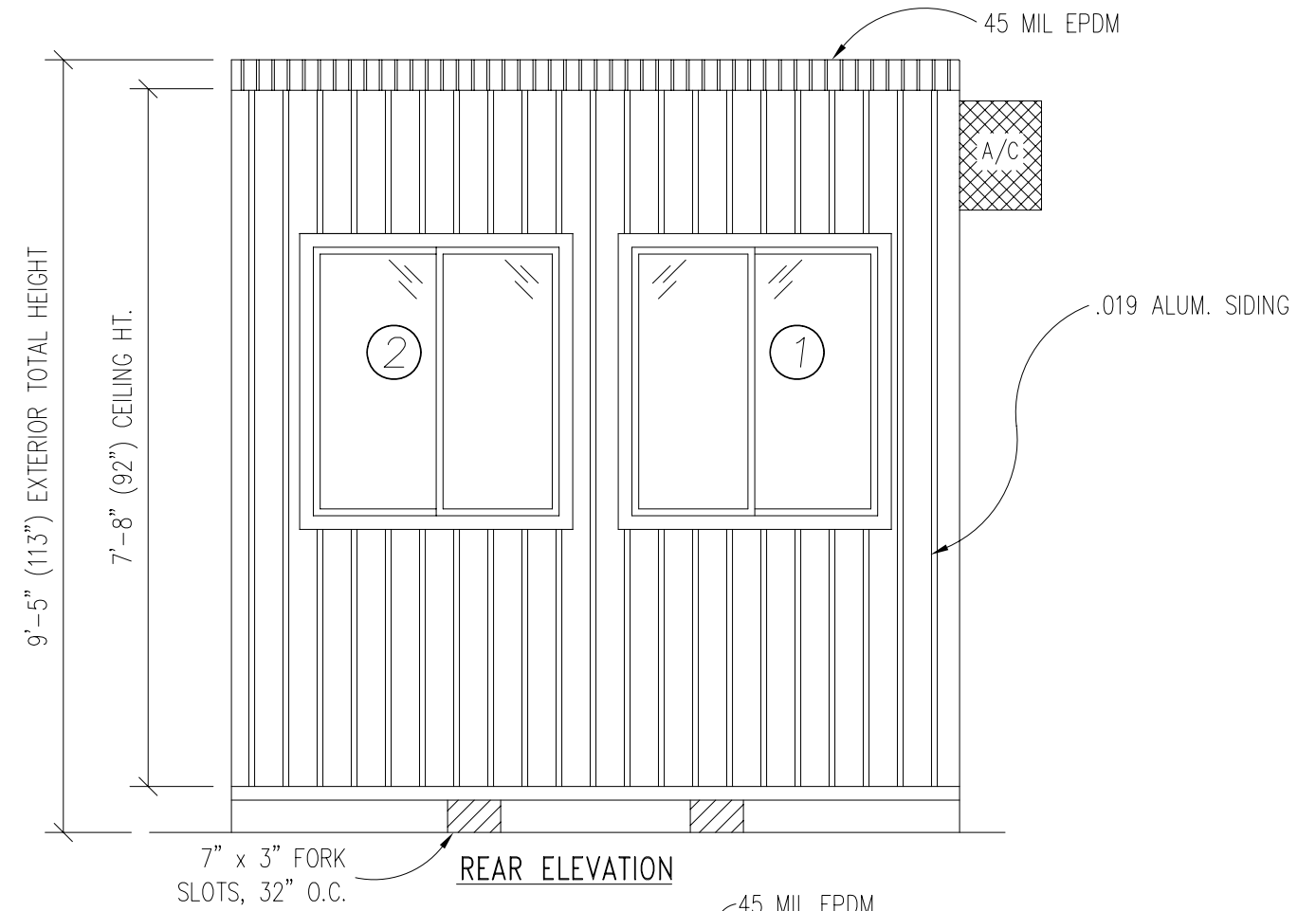
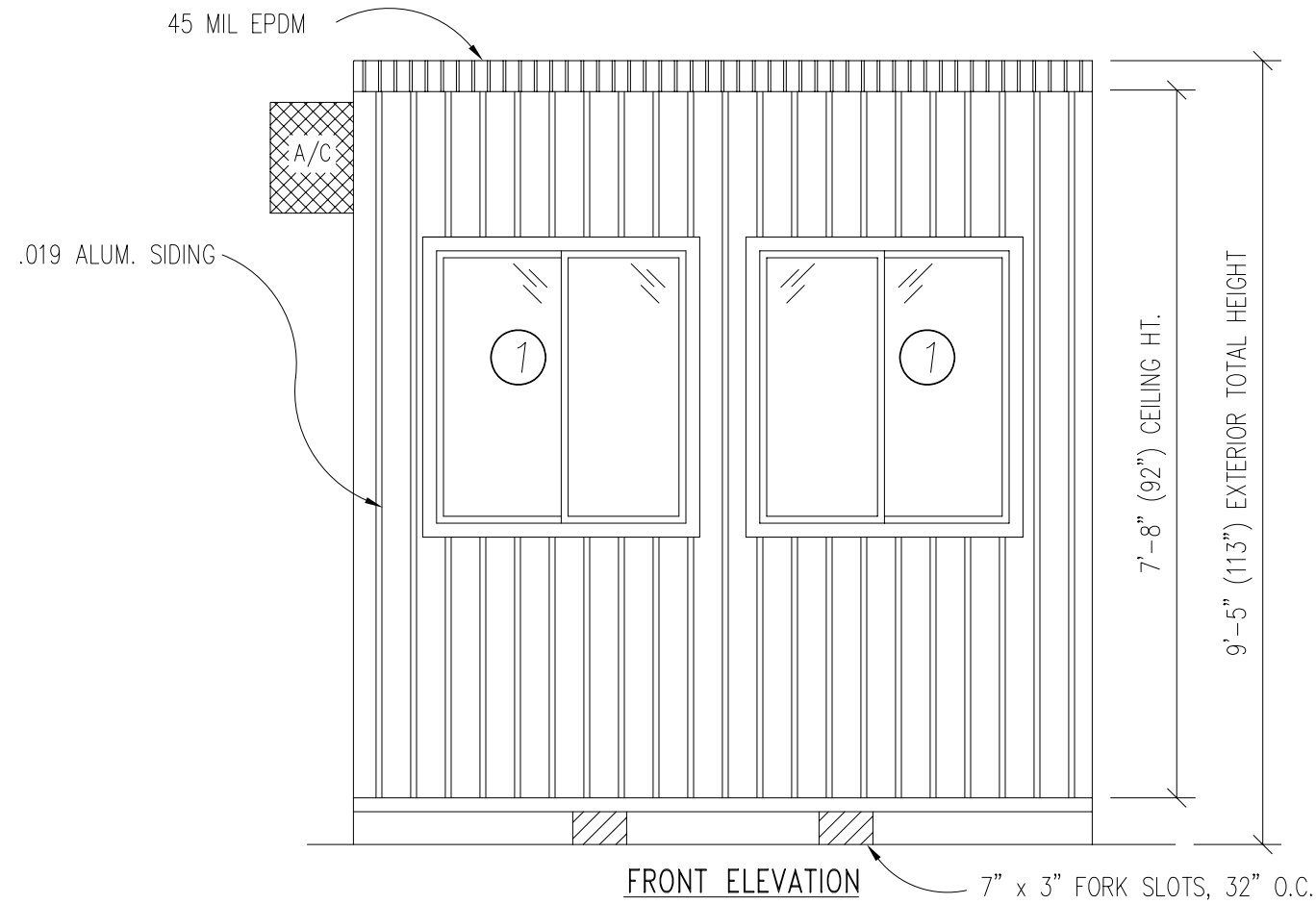
SIDING: .019 ALUMINUM
TRIM: .019 ALUMINUM
WALL SHEATHING: 7/16" OSB OR CDX PLYWOOD, 16/0 SPAN INDEX RATING
ROOF SHEATHING: 1/2" CDX PLYWOOD, 16/0 SPAN RATING
ROOF: .45 EPDM RUBBER ROOFING

FURNISHINGS

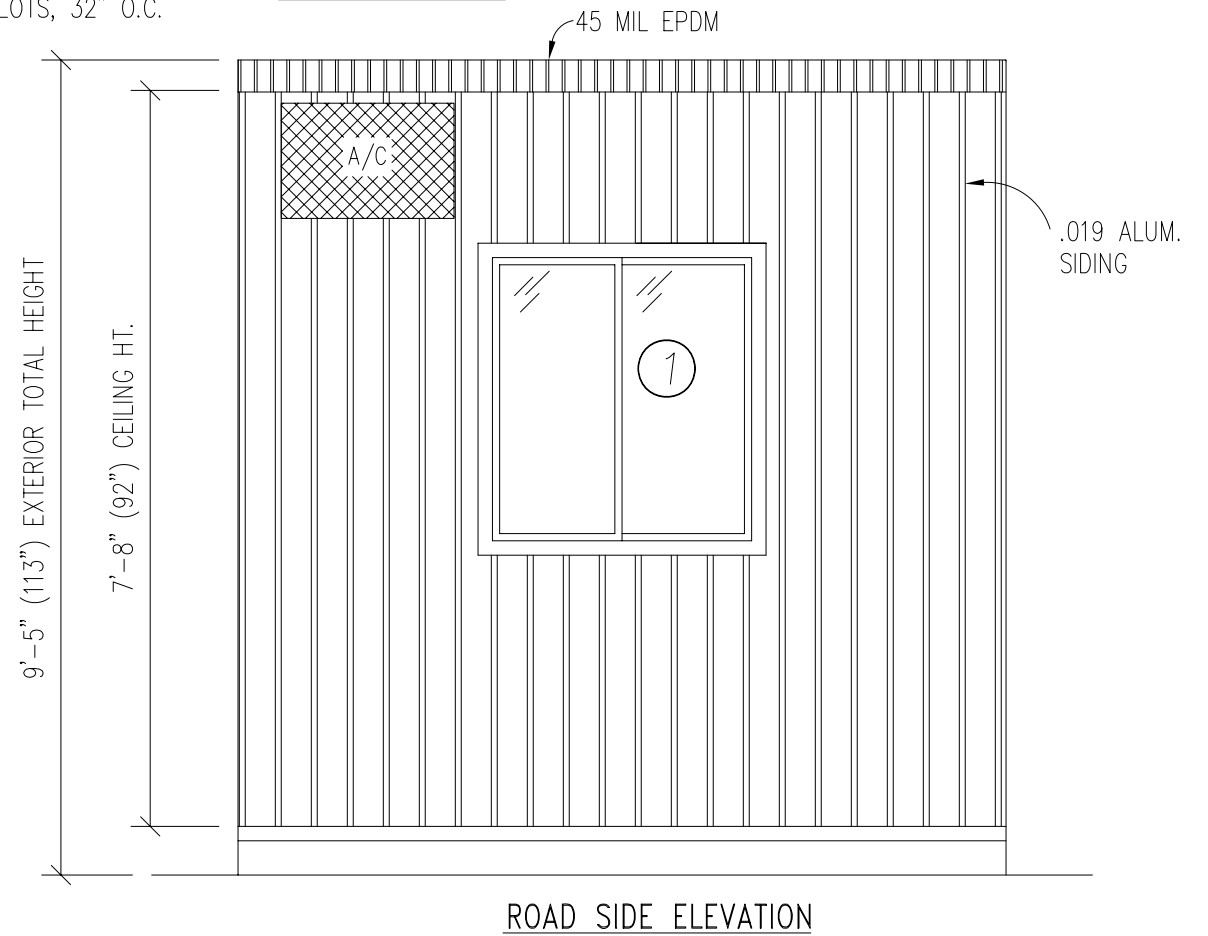
COUNTER TOP - WHITE MICA

TITLE: SPECIFICATIONS	DRAWN BY: R.M.	DATE: 11/14/07	JOB NO: 2007-372
MODEL: 88 O/A GUARD BOOTH	REV:	SCALE: NTS	DRAWING NO: 1

TWIN MODULAR SERVICES, INC.
1001 LOWER LANDING RD, SUITE 607, BLACKWOOD, NJ 08012



- DOOR AND WINDOW SCHEDULE**
- A 36"x80" ALUM. DOOR, ALUM. FRAME, FOAM INSULATED W/ 14"x14" S.G., LEVER PASSAGE HARDWARE
 - 1 (1) 36"x39" HORIZONTAL SLIDER, ALUM. MILL FRAME, SINGLE GLAZE
 - 2 (2) 36"x39" CLEAR TEMPERED GLASS - HORIZONTAL SLIDER, ALUM. MILL FRAME

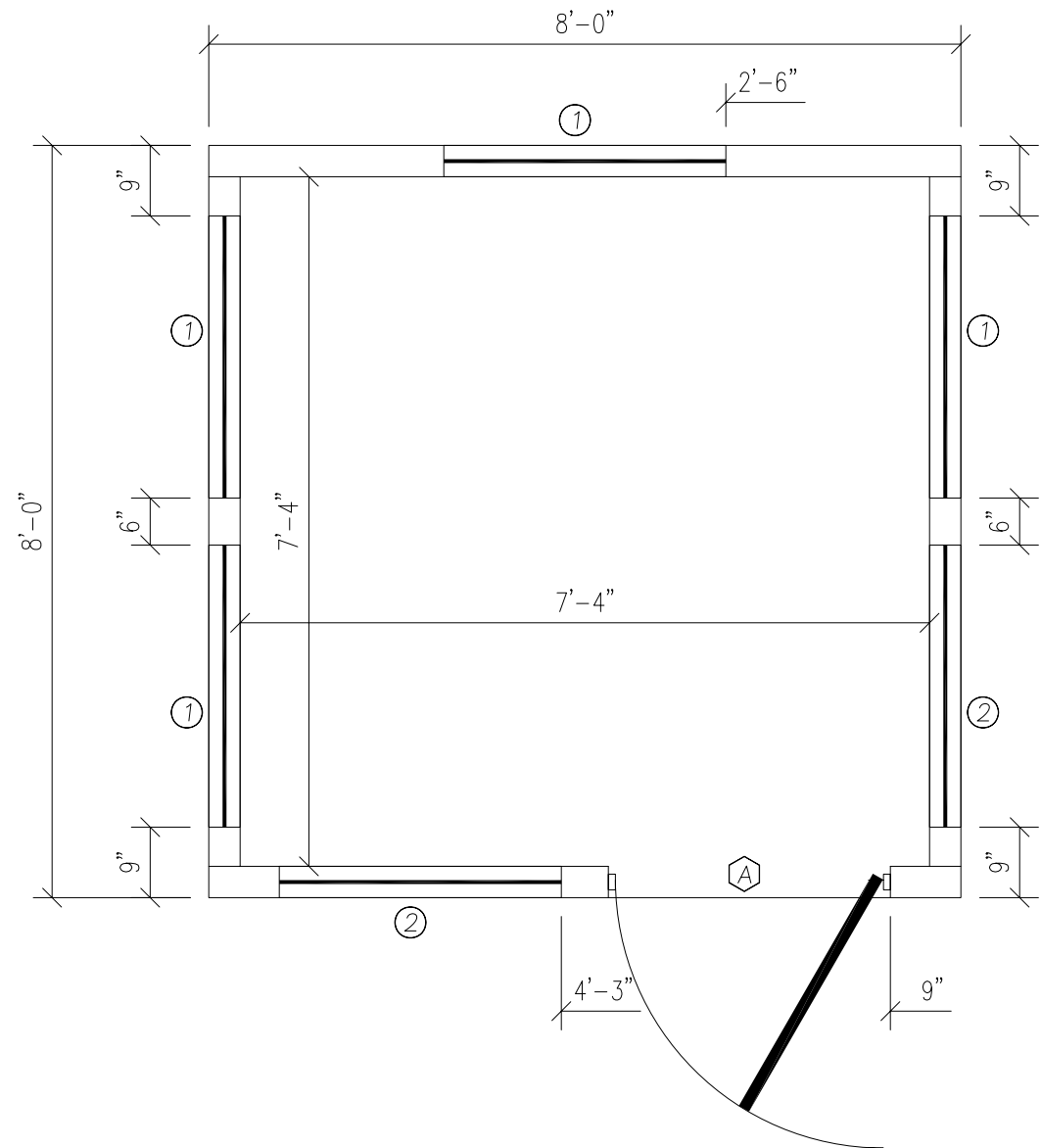
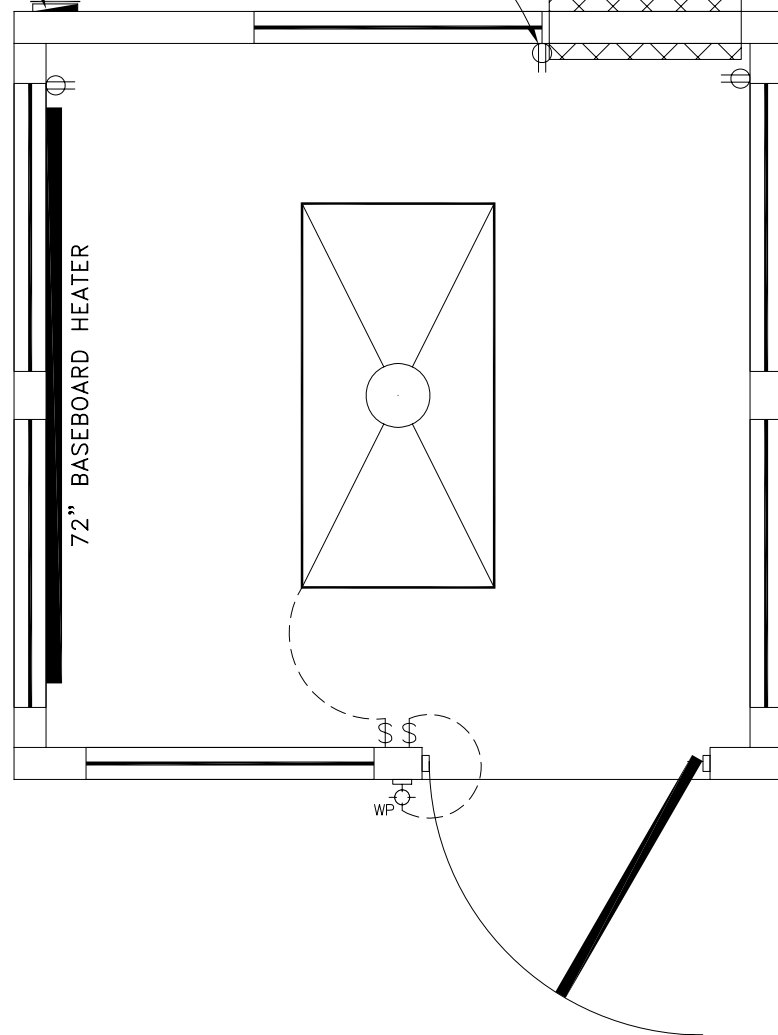


TITLE: ELEVATIONS	DRAWN BY: R.M.	TWIN MODULAR SERVICES, INC.	DATE: 11/14/07	JOB NO: 2007-372
MODEL: 88 O/A GUARD BOOTH	REV:	1001 LOWER LANDING RD, SUITE 607, BLACKWOOD, NJ 08012	SCALE: 1/4"=1'-0"	DRAWING NO: 2

SURFACE MOUNTED
100 AMP, EXTERIOR
ELEC. PANEL

DEDICATED RECEPT
FOR A/C

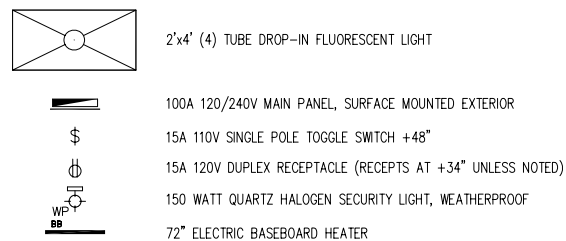
A/C
8000 BTU
WALL MOUNTED, +76" A.F.F.



ELECTRICAL

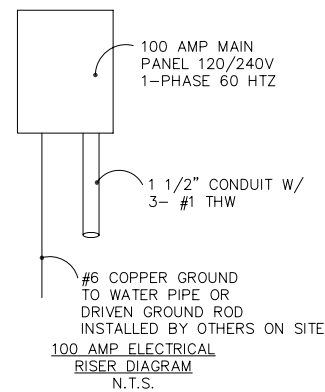
1. ALL RECEPTACLES TO BE GROUNDING TYPE.
2. ALL WIRING TO BE PER THE EDITION OF THE NEC LISTED ON THE COVER PAGE, TYPE NM ROMEX (CU) W/ GROUND.
3. MAIN PANEL TO BE MARKED "SUITABLE FOR USE AS SERVICE EQUIPMENT", AND BE EQUIPPED W/ BREAKER/FUSE TYPE OVERCURRENT PROTECTION.
4. PROPER THERMAL OVERLOAD PROTECTION TO BE PROVIDED FOR ALL MOTORS.
5. DISCONNECTING MEANS WITHIN SIGHT REQUIRED FOR ALL MOTORS.
6. WEATHERPROOF PROTECTION REQUIRED FOR ALL OUTDOOR LIGHTS, RECEPTACLES AND DISCONNECTS.
7. PROPER WORKING CLEARANCES TO BE PROVIDED AND MAINTAINED ABOUT ALL ELECTRICAL EQUIPMENT.
8. ALL FLUORESCENT FIXTURES REQUIRE THERMAL PROTECTION AND PROPER CLEARANCES FROM INSULATION, ALSO APPLICABLE FOR INCANDESCENT FIXTURES.
9. COMBINATION EXHAUST FAN/LIGHT AND ALL RECESSED INCANDESCENT FIXTURES TO BE WITH THERMAL PROTECTION.
10. EXIT LIGHTS (IF ELECTRIC) MUST BE FED FROM AN APPROVED EMERGENCY SERVICE CONNECTED AHEAD OF, BUT NOT WITHIN MAIN SERVICE DISCONNECTION MEANS ENCLOSURE, AND INSTALLED AS PER SERVICE REQUIREMENTS, OR BE BATTERY BACKUP TYPE UNITS.
11. SERVICE CONDUCTORS, LOCATED WITHIN THE PERIMETER OF THE BUILDING, SHALL BE INSTALLED IN ACCORDANCE WITH ARTICLE 230-6, PER THE EDITION OF THE NEC LISTED ON THE COVER PAGE.
12. MAXIMUM 15 (2) TUBE FLOURESCENT LIGHTS ON 15A CIRCUIT, MAXIMUM 10 RECEPTS ON 15A CIRCUIT, MAXIMUM 7 (4) TUBE FLOURESCENT LIGHTS ON 15A CIRCUIT.
13. MAXIMUM 20 (2) TUBE FLOURESCENT LIGHTS ON 20A CIRCUIT, MAXIMUM 13 RECEPTS ON 20A CIRCUIT, MAXIMUM 10 (4) TUBE FLOURESCENT LIGHTS ON 20A CIRCUIT.

ELECTRICAL LEGEND



**AMPACITIES OF INSULATED CONDUCTORS
90°C WIRE COPPER**

AWG	MAXIMUM AMPACITY
14	15 AMP
12	20 AMP
10	30 AMP
8	50 AMP
6	65 AMP
4	85 AMP
3	100 AMP
2	115 AMP
1	130 AMP



DOOR AND WINDOW SCHEDULE

- Ⓐ 36"x80" ALUM. DOOR, ALUM. FRAME, FOAM INSULATED W/ 14"x14" S.G., LEVER PASSAGE HARDWARE
- ① 36"x39" HORIZONTAL SLIDER, ALUM. MILL FRAME, SINGLE GLAZE
- ② 36"x39" CLEAR TEMPERED GLASS - HORIZONTAL SLIDER, ALUM. MILL FRAME

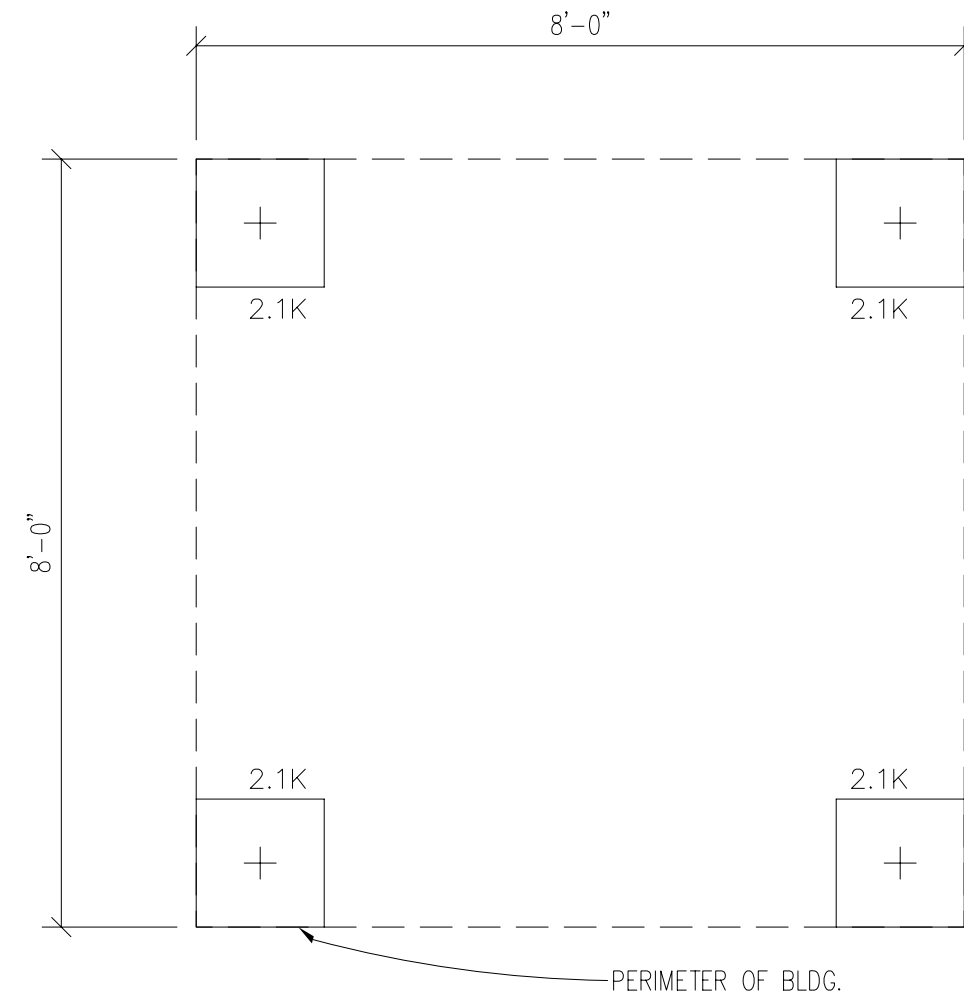
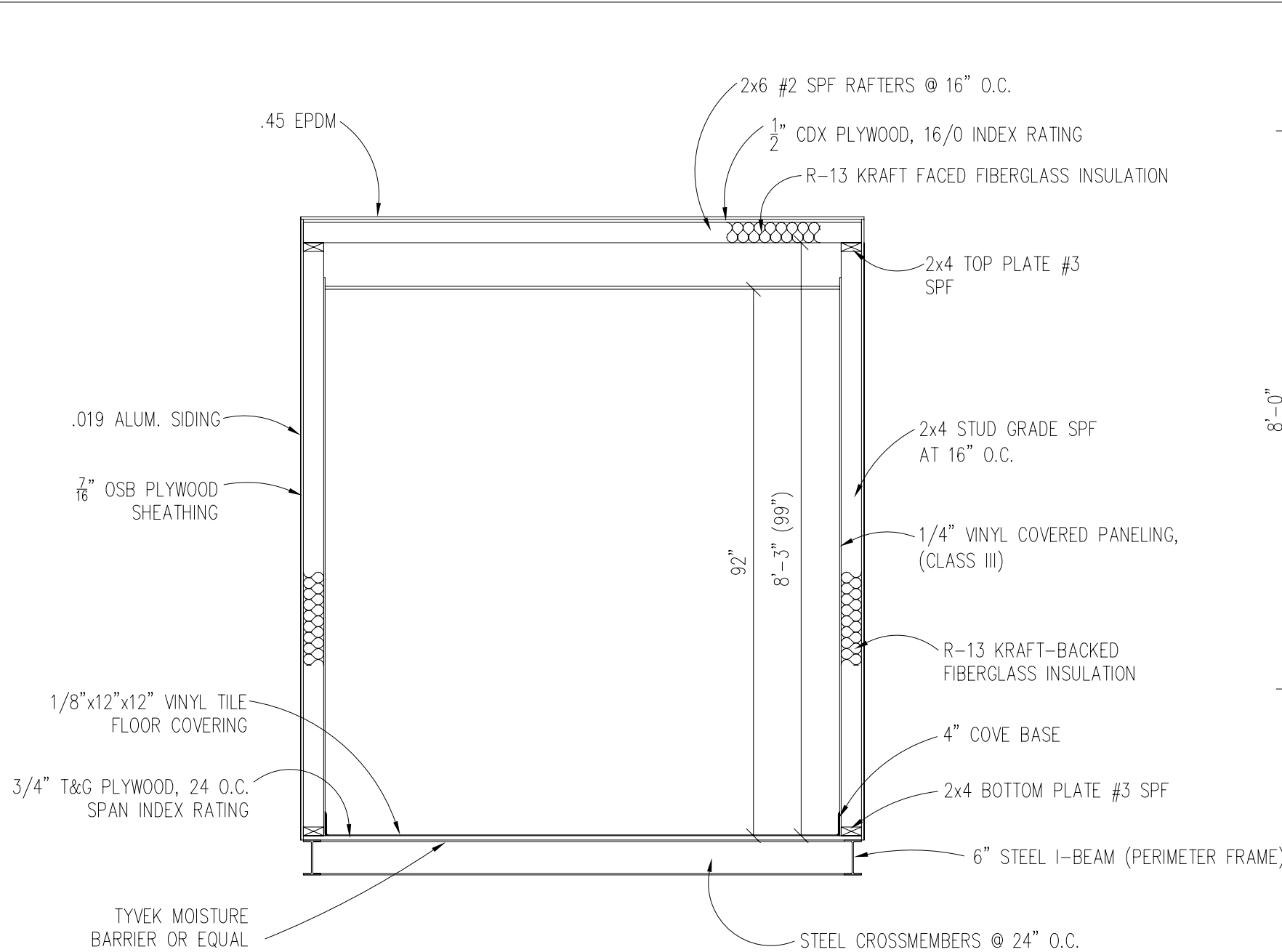
TITLE:
FLOOR / ELECTRICAL PLAN
MODEL:
88 O/A GUARD BOOTH

DRAWN BY:
R.M.
REV:

TWIN MODULAR SERVICES, INC.
1001 LOWER LANDING RD, SUITE 607, BLACKWOOD, NJ 08012

DATE: 11/15/07
SCALE: 1/4"=1'-0"

JOB NO: 2007-372
DRAWING NO: 3



FOUNDATION AND TIE-DOWN DESIGN BY OTHERS

BUILDING CODE

1. ATTIC VENTILATION SHALL NOT BE LESS THAN 1/150th OF THE HORIZONTAL AREA TO BE VENTILATED.
2. THE BUILDING EXTERIOR AND ALL FACILITIES WITHIN THE BUILDING SHALL BE IDENTIFIED WITH THE INTERNATIONAL SYMBOL OF ACCESSIBILITY.
3. OWNER / BUYER SHALL BE RESPONSIBLE FOR ON SITE BARRIER FREE PROVISIONS: STEPS, RAMPS, PARKING SIGNS, ETC. - BUILDING APPROACH (WALK OR RAMP) WITH A MINIMUM WIDTH OF 5' AND A GRADIENT OF NOT MORE THAN 1 FOOT IN 20 FEET.
4. ALL LOCKS TO BE UNLOCKABLE FROM THE INTERIOR WITHOUT THE USE OF A KEY OR SPECIAL KNOWLEDGE.
5. CORROSION RESISTANT FLASHING AT TOP AND SIDES OF DOORS, WINDOWS AND AT ROOF PENETRATIONS.
6. ALL GLAZING WITHIN 24" OF EXTERIOR PASSAGE DOORS AND IN PASSAGE DOORS, OR WITHIN 18" OF FLOOR TO BE "SAFETY GLAZED" AND SO MARKED.

FOUNDATION

1. THE PIER LOCATIONS SHOWN ON THIS PLAN ARE FOR THE PURPOSE OF IDENTIFYING THE LOCATION OF THE REQUIRED BLOCKING POINTS AND THE LOADS APPLIED AT EACH POINT FOR THIS BUILDING. FOUNDATION REQUIREMENTS ARE NOT KNOWN DUE TO VARYING SOIL CONDITIONS.
2. FOUNDATION DESIGN IS BY OTHERS. FOUNDATION REVIEW AND APPROVAL IS TO BE PERFORMED BY THE LOCAL OFFICIAL HAVING JURISDICTION.
3. CRAWL SPACE TO BE VENTILATED AT 1 SQ. FT. PER EACH 150 SQ. FT. OF CRAWL SPACE AREA TO BE VENTILATED.
4. PROVIDE POSITIVE DRAINAGE UNDER UNIT.
5. PROVIDE MINIMUM CRAWL SPACE ACCESS OF 22" x 24".
6. PIER LOADS ARE SHOWN IN KIPS

DESIGN LOADS

FLOOR LIVE LOAD	= 50 PSF
FLOOR DEAD LOAD	= 10 PSF
ROOF LIVE LOAD	= 40 PSF
ROOF DEAD LOAD	= 10 PSF
EXTERIOR WALL DEAD LOAD	= 42 PLF

FOUNDATION LEGEND

+ INDICATES BLOCKING TO BOTTOM OF MAIN I-BEAM

TITLE: BLOCKING POINTS PLAN CROSS SECTION	DRAWN BY: R.M.	DATE: 11/14/07	JOB NO: 2007-372
MODEL: 88 O/A GUARD BOOTH	REV:	SCALE: 1/4"=1'-0"	DRAWING NO: 4

TWIN MODULAR SERVICES, INC.
1001 LOWER LANDING RD, SUITE 607, BLACKWOOD, NJ 08012