

66 0 / A MODULAR GUARD BOOTH

(6' x 6' ACTUAL SIZE)

OHIO DESIGN CODES

2007 OHIO BUILDING CODE
 2007 OHIO MECHANICAL CODE
 2007 OHIO PLUMBING CODE
 2005 NATIONAL ELECTRICAL CODE

DESIGN LIVE LOADS

FLOOR:..... 50 PSF LIVE LOAD
 10 PSF DEAD LOAD

ROOF:..... 40 PSF LIVE LOAD
 10 PSF DEAD LOAD

CONSTRUCTION TYPE:..... 5B
 OCCUPANCY/USE GROUP: B
 BUILDING AREA:..... 48 SQ FT.
 MINIMUM BUILDING
 SET BACK:..... GREATER THAN 10 FEET TO A
 COMMON OR ASSUMED PROPERTY LINE

SEISMIC ZONE:..... GROUP I, CATEGORY C
 MAXIMUM WIND LOAD:..... 90 MPH, EXPOSURE C
 OCCUPANT LOAD:..... 1

DRAWING INDEX

DRAWING NUMBER	DESCRIPTION
#1	SPECIFICATIONS
#2	ELEVATIONS
#3	FLOOR / ELECTRICAL PLAN
#4	CROSS SECTION / BLOCKING POINTS PLAN

SPECIAL LIMITATIONS:
 ADEQUATE HANDICAPPED RESTROOM FACILITIES TO HANDLE THE
 ADDITIONAL OCCUPANT LOAD CREATED BY THE ADDITION OF THIS
 BUILDING TO A SITE SHALL BE PROVIDED IN AN ADJACENT
 BUILDING ON THE SAME PROPERTY. THE LOCAL OFFICIAL HAVING
 JURISDICTION SHALL VERIFY THE EXISTING FACILITIES.

NOTE:
 THIS PLAN MAY BE CONSTRUCTED AS A REVERSED IMAGE

TITLE: ELEVATIONS	DRAWN BY: R.M.	DATE: 9/23/08	JOB NO: 2008-361
MODEL: 6'x6' GUARD HOUSE	REV:	SCALE: 3/8"=1'-0"	DRAWING NO: 2
TWIN MODULAR SERVICES 1001 LOWER LANDING RD, SUITE 607, BLACKWOOD, NJ 08012			

CHASSIS

TYPE: PERIMETER
MAIN BEAM: 6" STEEL C CHANNEL
CROSS MEMBERS: 6" STEEL C CHANNEL 24" O.C.
PAINT: ASPHALT BASED

FLOOR

MOISTURE BARRIER: TYVEK OR EQUAL
INSULATION: NONE
DECKING: 3/4" PLYWOOD, 24 O.C. SECURED DIRECTLY TO STEEL FRAME
COVERING: 1/8"x12"x12" VINYL TILE
TRIM: 4" VINYL COVE BASE
OPTIONAL: 3/16" STEEL PLATE FLOOR W/ NON-SKID PAINT

EXTERIOR WALLS

STUDS: 2"x4" STUD GRADE SPF @ 16" O.C.
BOTTOM PLATE: SINGLE 2"x4" #3 SPF
TOP PLATE SINGLE 2"x4" #3 SPF
WALL HEIGHT: 8'-4"
FINISHED CEILING HT: 7'-10" A.F.F.
INSULATION: R-13 FIBERGLASS KRAFT-BACKED BATTS
INT. WALL COVERING: 1/8" VINYL COVERED PANEL (CLASS III)
OPTION: 1/2" VINYL COVERED GYP. WALL COVERING (CLASS I)

ROOF

TYPE: RAFTER, 2x6 #3 SPF @ 16" O.C.
CEILING: 2'x4' T-GRID DROP CEILING @ 7'-10" A.F.F.
INSULATION: R-13 KRAFT FACED FIBERGLASS BATTS
OPTIONAL: 6" ROOF OVERHANG, ALL SIDES

ELECTRICAL

MAIN DISTRIBUTION PANEL: EXTERIOR (WEATHERPROOF, NEMA 3R) 100 AMP 120/240 VOLT SINGLE PHASE, 3 WIRE, 60 HZ. WITH GROUND
RACEWAY: MINIMUM #14/2 W/ GROUND 90 DEG. C. TYPE MC, COPPER
INTERIOR LIGHTS: 2'x4' TWO TUBE LAY-IN FLUORESCENT TROFFER PER PRINT
EXTERIOR LIGHTS: 150 WATT QUARTZ HALOGEN SECURITY LIGHT (WEATHERPROOF)
SWITCHES: 120 V. 15 AMP SINGLE POLE PER PRINT
RECEPTACLES: 120 V. 15 AMP DUPLEX RECEPPTS PER PRINT
OPTIONAL: ADDITIONAL RECEPTACLES
OPTIONAL: ADDITIONAL EXTERIOR LIGHTING
OPTIONAL: INTERIOR RECESSED ELECTRICAL PANEL, 100 AMP

H.V.A.C.

HEATING: 220V, 20 AMP, 4' ELEC. BASEBOARD HEATER, DEDICATED CIRCUIT
AIR CONDITIONING: 110V (DEDICATED CIRCUIT) 6500 BTU WALL MOUNT
OPTIONAL: WALL MOUNT 11,700 BTU AIR CONDITIONER W/ HEAT COMBO UNIT, 115V, (AIR CONDITIONER 7700 BTU - HEAT 4000 BTU)

EXTERIOR WINDOWS & DOORS

DOORS: 36"x80" ALUM. DOOR, ALUM. FRAME, FOAM INSULATED W/ 14"x14" WINDOW (SAFETY GLAZED), LEVER HARDWARE
OPTIONAL: 36"x80" STEEL DOOR W/ 22"x30" WINDOW (SAFETY GLAZED), LEVER HARDWARE & CLOSER
WINDOWS: 36"x39" HORIZONTAL SLIDER, ALUM. MILL FINISH, SINGLE GLAZE
36"x39" HORIZONTAL SLIDER, ALUM. MILL FINISH, TEMPERED SAFETY GLAZING
OPTIONAL: 36"x39" HORIZONTAL SLIDER, VINYL CLAD, THERMAL PANE
36"x39" FIXED GLAZING, VINYL CLAD, THERMAL PANE OR SINGLE GLAZING, MILL FINISH FRAME
24"x36" CLEAR TEMPERED GLASS TICKET WINDOW W/ STAINLESS STEEL SHELF, SPEAK-THRU & HALF ROUND TICKET SERVICE

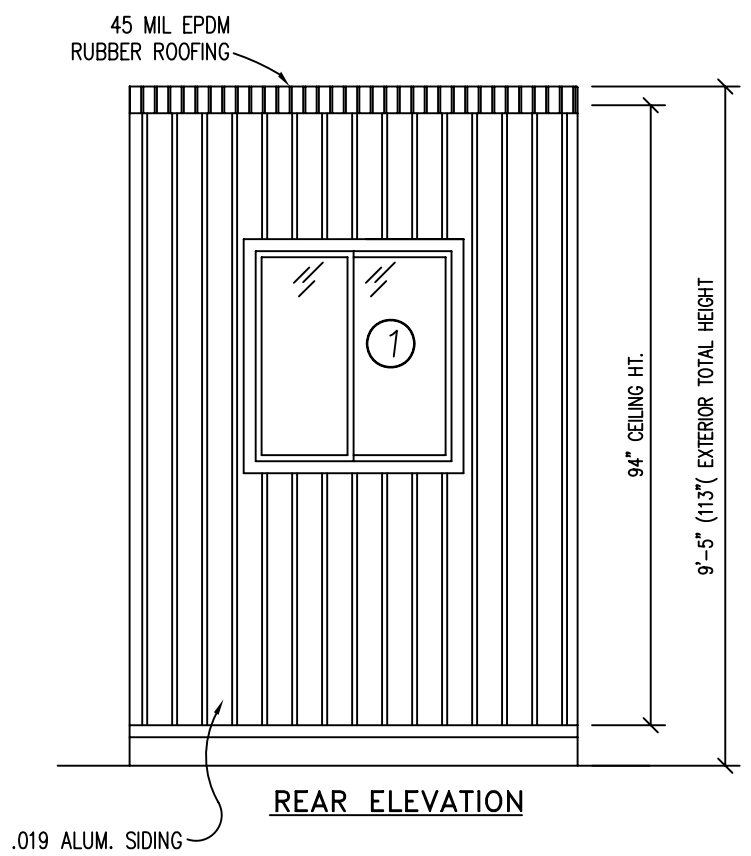
EXTERIOR FINISHES

SIDING: .019 ALUMINUM
TRIM: .019 ALUMINUM
WALL SHEATHING: 7/16" OSB, 16/0 APA SPAN INDEX RATING
ROOF SHEATHING: 1/2" CDX PLYWOOD, 16/0 SPAN RATING
ROOF: .45 EPDM RUBBER ROOFING

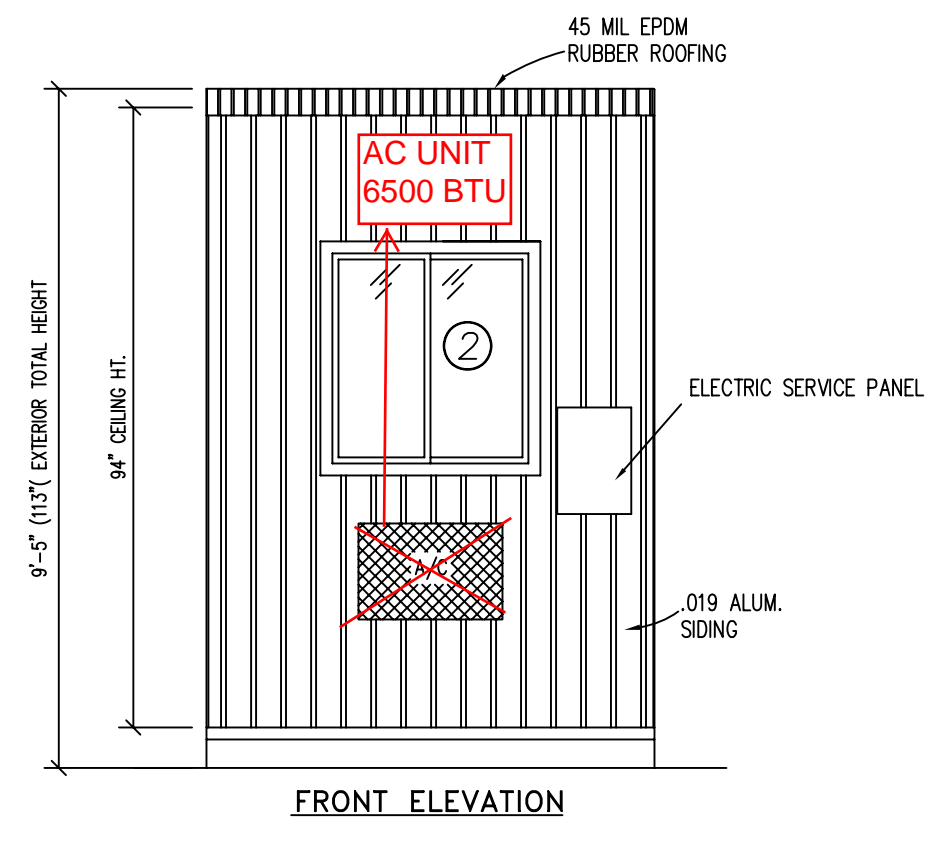
FURNITURE

2'-0" x 5'-4" COUNTER TOP - WHITE MICA

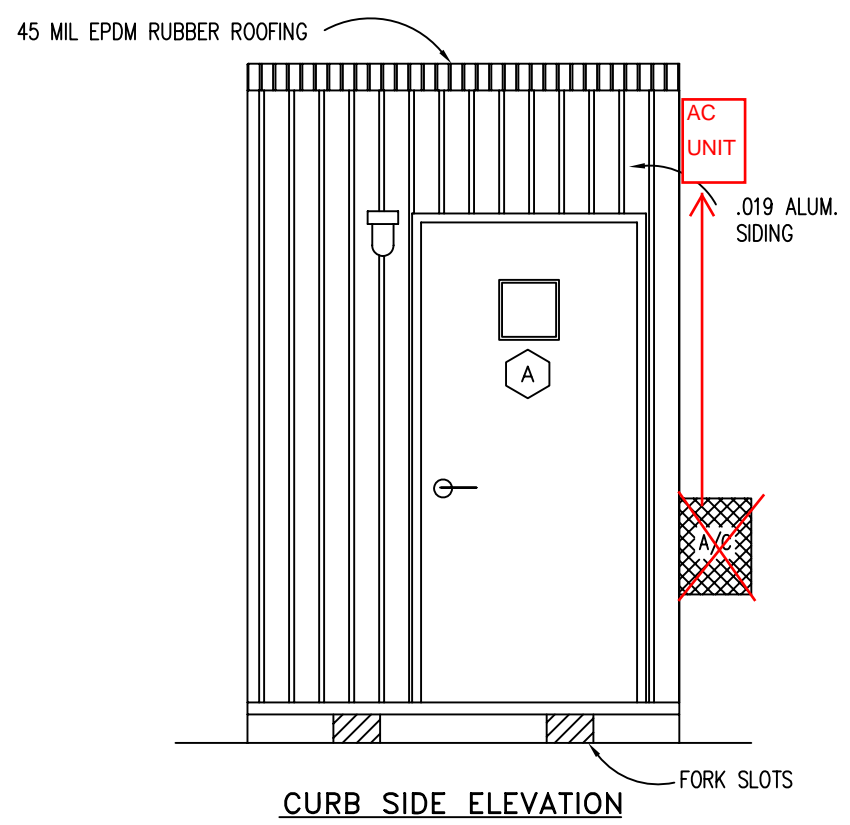
TITLE: ELEVATIONS	DATE: 9/23/08	JOB NO: 2008-361
MODEL: 6'x6' GUARD HOUSE	SCALE: 3/8"=1'-0"	DRAWING NO: 2
TWIN MODULAR SERVICES		
1001 LOWER LANDING RD, SUITE 607, BLACKWOOD, NJ 08012		
DRAWN BY: R.M.		
REV:		



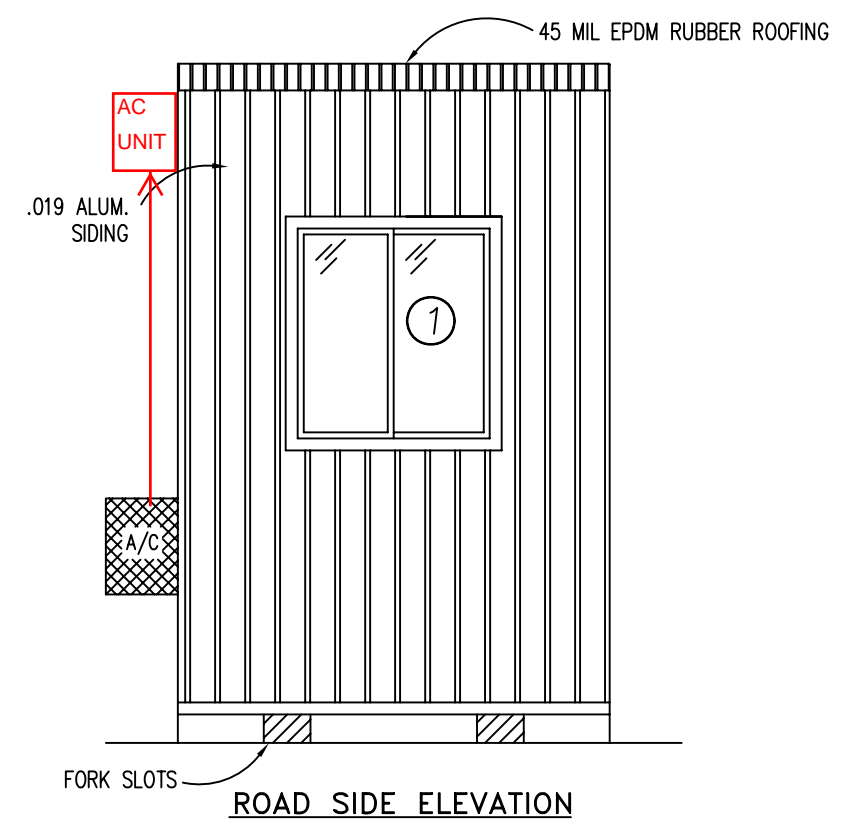
REAR ELEVATION



FRONT ELEVATION



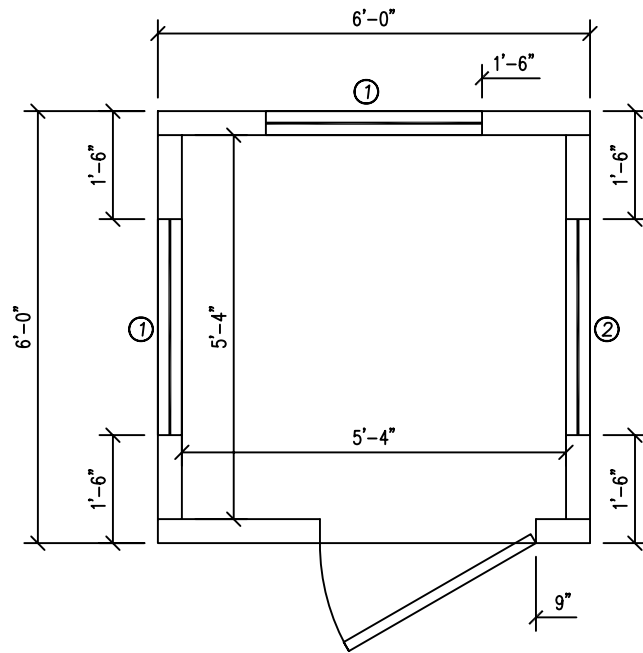
CURB SIDE ELEVATION



ROAD SIDE ELEVATION

- DOOR AND WINDOW SCHEDULE**
- Ⓐ 36"x80" ALUM. DOOR, ALUM. FRAME, FOAM INSULATED W/ 14"x14" WINDOW (SAFETY GLAZED), LEVER HARDWARE
 - ① 36"x39" HORIZONTAL SLIDER, ALUM. MILL FINISH, SINGLE GLAZE
 - ② 36"x39" HORIZONTAL SLIDER, ALUM. MILL FINISH, TEMPERED SAFETY GLAZING

TITLE: ELEVATIONS	DRAWN BY: R.M.	TWIN MODULAR SERVICES	DATE: 9/23/08	JOB NO: 2008-361
MODEL: 6'x6' GUARD HOUSE	REV:	1001 LOWER LANDING RD, SUITE 607, BLACKWOOD, NJ 08012	SCALE: 3/8"=1'-0"	DRAWING NO: 2

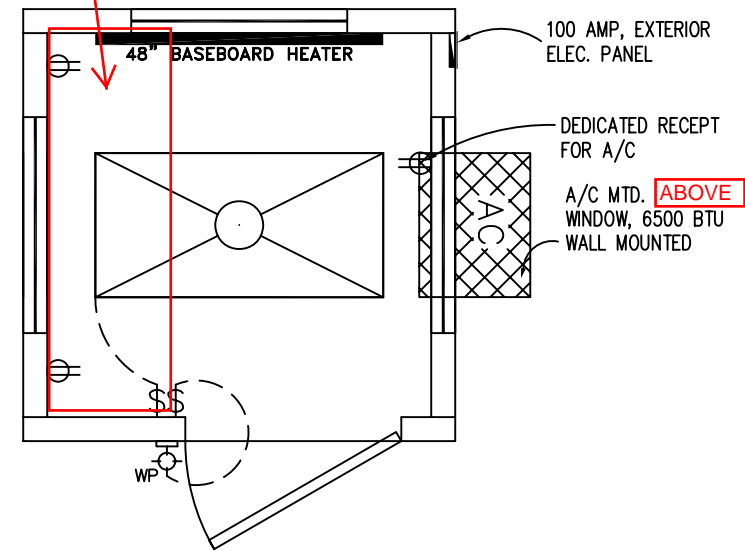


GUARDHOUSE FLOOR PLAN

DOOR AND WINDOW SCHEDULE

- Ⓐ 36"x80" ALUM. DOOR, ALUM. FRAME, FOAM INSULATED W/ 14"x14" WINDOW (SAFETY GLAZED), LEVER HARDWARE
- ① 36"x39" HORIZONTAL SLIDER, ALUM. MILL FINISH, SINGLE GLAZE
- ② 36"x39" HORIZONTAL SLIDER, ALUM. MILL FINISH, TEMPERED SAFETY GLAZING

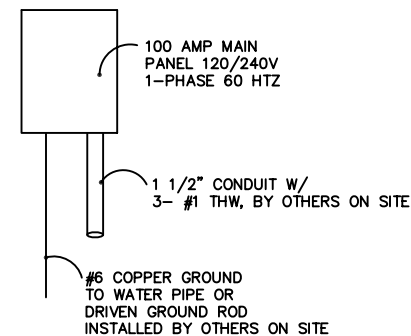
DESK TOP



GUARDHOUSE ELECTRICAL PLAN

ELECTRICAL

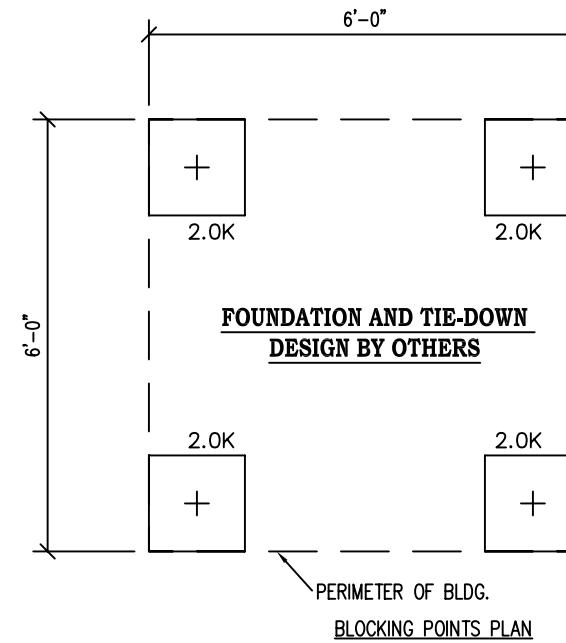
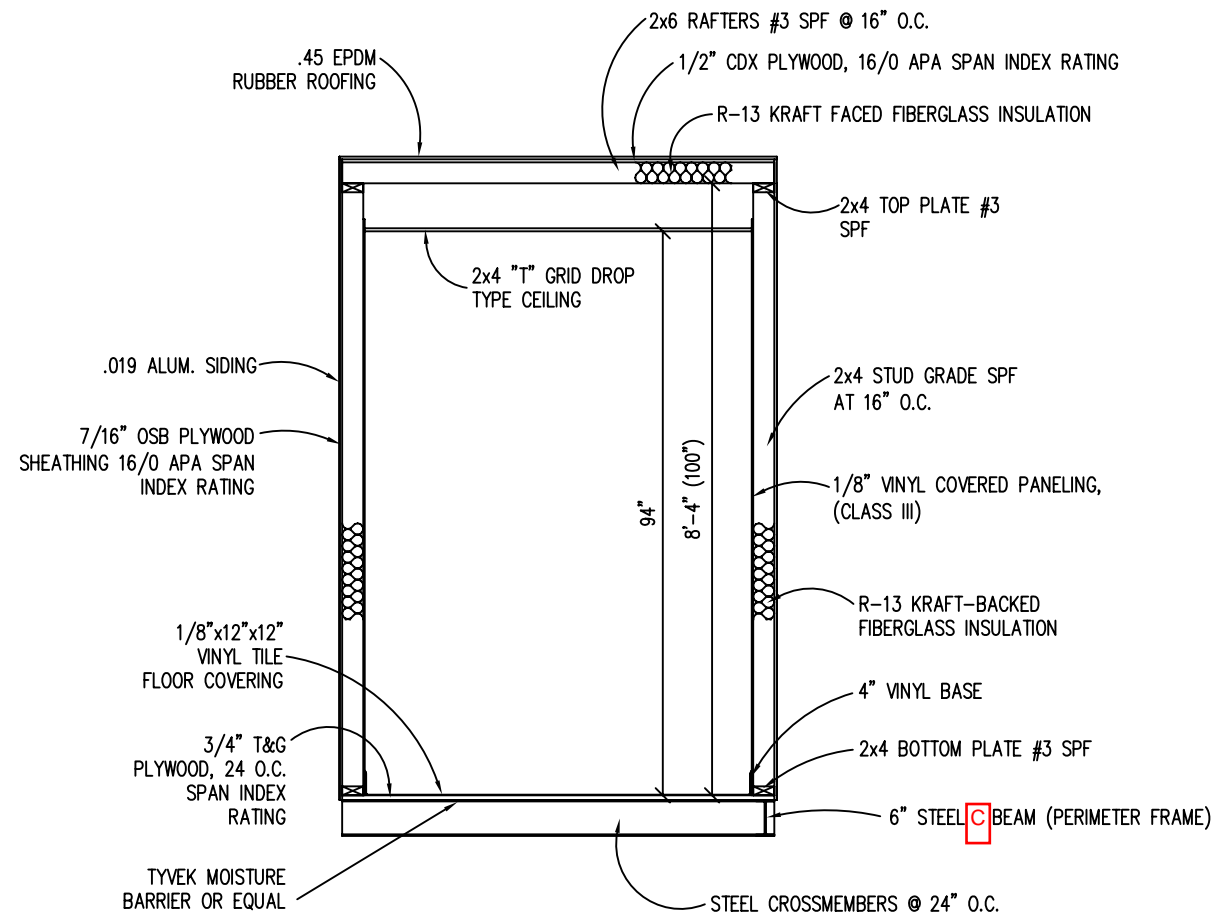
1. ALL RECEPTACLES TO BE GROUNDING TYPE.
2. ALL WIRING TO BE PER THE EDITION OF THE NEC LISTED ON THE COVER PAGE, TYPE MC (CU) W/ GROUND.
3. MAIN PANEL TO BE MARKED "SUITABLE FOR USE AS SERVICE EQUIPMENT", AND BE EQUIPPED W/ BREAKER/FUSE TYPE OVERCURRENT PROTECTION.
4. PROPER THERMAL OVERLOAD PROTECTION TO BE PROVIDED FOR ALL MOTORS.
5. DISCONNECTING MEANS WITHIN SIGHT REQUIRED FOR ALL MOTORS.
6. WEATHERPROOF PROTECTION REQUIRED FOR ALL OUTDOOR LIGHTS, RECEPTACLES AND DISCONNECTS.
7. PROPER WORKING CLEARANCES TO BE PROVIDED AND MAINTAINED ABOUT ALL ELECTRICAL EQUIPMENT.
8. ALL FLUORESCENT FIXTURES REQUIRE THERMAL PROTECTION AND PROPER CLEARANCES FROM INSULATION, ALSO APPLICABLE FOR INCANDESCENT FIXTURES.
9. COMBINATION EXHAUST FAN/LIGHT AND ALL RECESSED INCANDESCENT FIXTURES TO BE WITH THERMAL PROTECTION.
10. EXIT LIGHTS (IF ELECTRIC) MUST BE FED FROM AN APPROVED EMERGENCY SERVICE CONNECTED AHEAD OF, BUT NOT WITHIN MAIN SERVICE DISCONNECTION MEANS ENCLOSURE, AND INSTALLED AS PER SERVICE REQUIREMENTS, OR BE BATTERY BACKUP TYPE UNITS.
11. SERVICE CONDUCTORS, LOCATED WITHIN THE PERIMETER OF THE BUILDING, SHALL BE INSTALLED IN ACCORDANCE WITH ARTICLE 230-6, PER THE EDITION OF THE NEC LISTED ON THE COVER PAGE.
12. MAXIMUM 15 (2) TUBE FLUORESCENT LIGHTS ON 15A CIRCUIT, MAXIMUM 10 RECEPTS ON 15A CIRCUIT, MAXIMUM 7 (4) TUBE FLUORESCENT LIGHTS ON 15A CIRCUIT.
13. MAXIMUM 20 (2) TUBE FLUORESCENT LIGHTS ON 20A CIRCUIT, MAXIMUM 13 RECEPTS ON 20A CIRCUIT, MAXIMUM 10 (4) TUBE FLUORESCENT LIGHTS ON 20A CIRCUIT.



AMPACITIES OF INSULATED CONDUCTORS 90°C WIRE COPPER

AWG	MAXIMUM AMPACITY
14	15 AMP
12	20 AMP
10	30 AMP
8	50 AMP
6	65 AMP
4	85 AMP
3	100 AMP
2	115 AMP
1	130 AMP

- ELECTRICAL LEGEND**
- 2'x4' DROP-IN FLUORESCENT LIGHT
 - 100AMP, EXTERIOR, 120/240V MAIN PANEL, WEATHERPROOF
 - 15A 110V SINGLE POLE TOGGLE SWITCH +48"
 - 15A 120V DUPLEX RECEPTACLE (RECEPTS AT +34" UNLESS NOTED)
 - EXTERIOR WALL MOUNTED LIGHT, WEATHERPROOF
 - 48" BASEBOARD HEATER



DESIGN LOADS

FLOOR LIVE LOAD	= 50 PSF
FLOOR DEAD LOAD	= 10 PSF
ROOF LIVE LOAD	= 40 PSF
ROOF DEAD LOAD	= 10 PSF
EXTERIOR WALL DEAD LOAD	= 42 PLF

FOUNDATION LEGEND

+	INDICATES BLOCKING TO BOTTOM OF MAIN I-BEAM
---	---

FOUNDATION

1. THE PIER LOCATIONS SHOWN ON THIS PLAN ARE FOR THE PURPOSE OF IDENTIFYING THE LOCATION OF THE REQUIRED BLOCKING POINTS AND THE LOADS APPLIED AT EACH POINT FOR THIS BUILDING. FOUNDATION REQUIREMENTS ARE NOT KNOWN DUE TO VARYING SOIL CONDITIONS.
2. FOUNDATION DESIGN IS BY OTHERS. FOUNDATION REVIEW AND APPROVAL IS TO BE PERFORMED BY THE LOCAL OFFICIAL HAVING JURISDICTION.
3. CRAWL SPACE TO BE VENTILATED AT 1 SQ. FT. PER EACH 150 SQ. FT. OF CRAWL SPACE AREA TO BE VENTILATED.
4. PROVIDE POSITIVE DRAINAGE UNDER UNIT.
5. PROVIDE MINIMUM CRAWL SPACE ACCESS OF 22" x 24".

BUILDING CODE

1. ATTIC VENTILATION SHALL NOT BE LESS THAN 1/150th OF THE HORIZONTAL AREA TO BE VENTILATED.
2. THE BUILDING EXTERIOR AND ALL FACILITIES WITHIN THE BUILDING SHALL BE IDENTIFIED WITH THE INTERNATIONAL SYMBOL OF ACCESSIBILITY.
3. CUSTOMER/BUYER SHALL BE RESPONSIBLE FOR ON SITE BARRIER FREE PROVISIONS: STEPS, RAMPS, PARKING SIGNS, ETC. - BUILDING APPROACH (WALK OR RAMP) WITH A MINIMUM WIDTH OF 5' AND A GRADIENT OF NOT MORE THAN 1 FOOT IN 20 FEET.
4. ALL LOCKS TO BE UNLOCKABLE FROM THE INTERIOR WITHOUT THE USE OF A KEY OR SPECIAL KNOWLEDGE.
5. CORROSION RESISTANT FLASHING AT TOP AND SIDES OF DOORS, WINDOWS AND AT ROOF PENETRATIONS.
6. ALL GLAZING WITHIN 24" OF EXTERIOR PASSAGE DOORS AND IN PASSAGE DOORS, OR WITHIN 18" OF FLOOR TO BE "SAFETY GLAZED" AND SO MARKED.

TWIN MODULAR SERVICES	DATE: 9/23/08	JOB NO: 2008-361
1001 LOWER LANDING RD, SUITE 607, BLACKWOOD, NJ 08012	SCALE: 3/8"=1'-0"	DRAWING NO: 4
TITLE: BLOCKING POINTS PLAN CROSS SECTION	DRAWN BY: R.M.	
MODEL: 6'x6' GUARD HOUSE	REV:	