

46 0 / A MODULAR GUARD BOOTH

(4' x 6' ACTUAL SIZE)

OHIO DESIGN CODES

2007 OHIO BUILDING CODE
 2007 OHIO MECHANICAL CODE
 2007 OHIO PLUMBING CODE
 2005 NATIONAL ELECTRICAL CODE

DESIGN LIVE LOADS

FLOOR:..... 50 PSF LIVE LOAD
 10 PSF DEAD LOAD

ROOF:..... 40 PSF LIVE LOAD
 10 PSF DEAD LOAD

CONSTRUCTION TYPE:..... 5B
 OCCUPANCY/USE GROUP: B
 BUILDING AREA:..... 24 SQ FT.
 MINIMUM BUILDING
 SET BACK:..... GREATER THAN 10 FEET TO A
 COMMON OR ASSUMED PROPERTY LINE

SEISMIC ZONE:..... GROUP I, CATEGORY C
 MAXIMUM WIND LOAD:..... 90 MPH, EXPOSURE C
 OCCUPANT LOAD:..... 1

DRAWING INDEX

DRAWING NUMBER	DESCRIPTION
#1	SPECIFICATIONS
#2	ELEVATIONS (GUARDHOUSE PLAN "A")
#3	ELEVATIONS (GUARDHOUSE PLAN ""B")
#4	FLOOR / ELECTRICAL PLAN
#5	CROSS SECTION / BLOCKING POINTS PLAN

SPECIAL LIMITATIONS:

ADEQUATE HANDICAPPED RESTROOM FACILITIES TO HANDLE THE ADDITIONAL OCCUPANT LOAD CREATED BY THE ADDITION OF THIS BUILDING TO A SITE SHALL BE PROVIDED IN AN ADJACENT BUILDING ON THE SAME PROPERTY. THE LOCAL OFFICIAL HAVING JURISDICTION SHALL VERIFY THE EXISTING FACILITIES.

TITLE: COVER SHEET	DRAWN BY: R.M.	DATE: 11/13/07	JOB NO: 2007-371
MODEL: 46 0/A GUARD BOOTH	REV:	SCALE: NTS	DRAWING NO: CVR

TWIN MODULAR SERVICES, INC.
 1001 LOWER LANDING RD, SUITE 607, BLACKWOOD, NJ 08012

CHASSIS

TYPE: PERIMETER

MAIN BEAM: 6" **C CHANNEL 8.2 LBS PER FT**

CROSS MEMBERS: 6" **C CHANNEL** @ 24" O.C.

PAINT: ASPHALT BASED

FLOOR

INSULATION: NONE

DECKING: 3/4" PLYWOOD, 24 O.C. SECURED DIRECTLY TO STEEL FRAME

OPTIONAL: 1/4" STEEL PLATE FLOOR W/ NON-SKIP EPOXY PAINT

COVERING: 1/8"x12"x12" VINYL TILE

TRIM: 4" VINYL COVE BASE

MOISTURE BARRIER: TYVEK OR EQUAL

EXTERIOR WALLS

STUDS: 2"x4" STUD GRADE SPF @ 16" O.C.

BOTTOM PLATE: SINGLE 2"x4" #3 SPF

TOP PLATE SINGLE 2"x4" #3 SPF

WALL HEIGHT: 8'-3"

FINISHED CEILING HT: 7'-8" A.F.F.

INSULATION: R-13 FIBERGLASS KRAFT-BACKED BATTS

INT. WALL COVERING: 1/4" VINYL COVERED PANEL (CLASS III)

INT. WALL COVERING OPTION: 1/2" VINYL COVERED GYP. (CLASS I)

ROOF

TYPE: RAFTER, 2x4 #2 SPF @ 16" O.C.

CEILING: 2'x4' T-GRID DROP CEILING @ 7'-9" A.F.F.

INSULATION: R-13 KRAFT FACED FIBERGLASS BATTS

OPTIONAL: 6" OVERHANG ALL SIDES

ELECTRICAL

MAIN DISTRIBUTION PANEL: EXTERIOR (WEATHERPROOF) 100 AMP 120/240 VOLT SINGLE PHASE, 3 WIRE, 60 HZ. WITH GROUND

RACEWAY: MINIMUM #14/2, 90 DEG. C. TYPE MC, COPPER

INTERIOR LIGHTS: 2'x2' TWO TUBE LAY-IN FLUORESCENT TROFFER PER PRINT

EXTERIOR LIGHTS: 150 WATT QUARTZ HALOGEN SECURITY LIGHT (WEATHERPROOF)

SWITCHES: 120 V. 15 AMP SINGLE POLE PER PRINT

RECEPTACLES: 120 V. 15 AMP DUPLEX RECEPES PER PRINT

H.V.A.C.

HEATING: 220V, 20 AMP, 4' ELEC. BASEBOARD HEATER, DEDICATED CIRCUIT

AIR CONDITIONING: 110V, 5000 BTU WALL MOUNT, DEDICATED CIRCUIT

OPTION: THERMOSTAT CONTROL OF A/C & B.B. HEATER

OPTION: 11600 BTU AIR CONTITIONING / HEAT COMBO UNIT, WALL MOUNTED

EXTERIOR WINDOWS & DOORS

DOORS: 36"x80" ALUM. DOOR, ALUM. FRAME, FOAM INSULATED W/ 14"x14" S.G., LEVER PASSAGE HARDWARE

OPTION: 36"x80" STEEL DOOR W/ 22"x30" WINDOW (S.G.), CLOSER

WINDOWS: 36"x39" HORIZONTAL SLIDER, ALUM. MILL FRAME, SINGLE GLAZE

36"x39" CLEAR TEMPERED GLASS - HORIZONTAL SLIDER, ALUM. MILL FRAME

OPTION: 36"x39" HORIZONTAL SLIDER, VINYL THERMAL INSULATED WINDOWS

OPTION: 24"x36" CLEAR TEMPERED GLASS TICKET WINDOW WITH STAINLESS STEEL SHELF, SPEAK-THRU & 1/2 ROUND TICKET SERVICE

OPTION: 36"x39" PICTURE WINDOW - NON OPERABLE, VINYL THERMAL INSULATED OR SINGLE GLAZED MILL FINISH FRAMES

EXTERIOR FINISHES

SIDING: .019 ALUMINUM

TRIM: .019 ALUMINUM

WALL SHEATHING: 7/16" OSB OR CDX PLYWOOD, 16/0 SPAN INDEX RATING

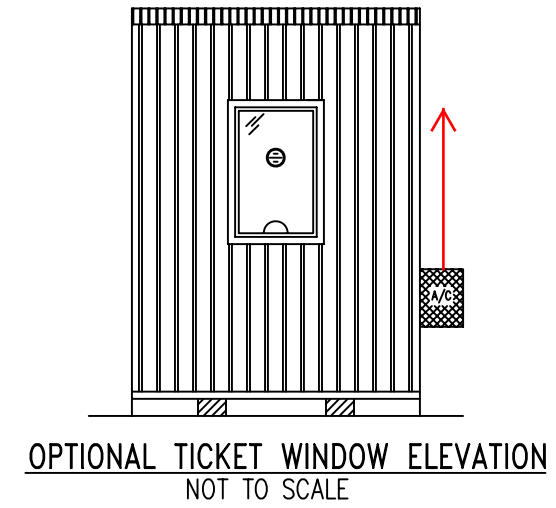
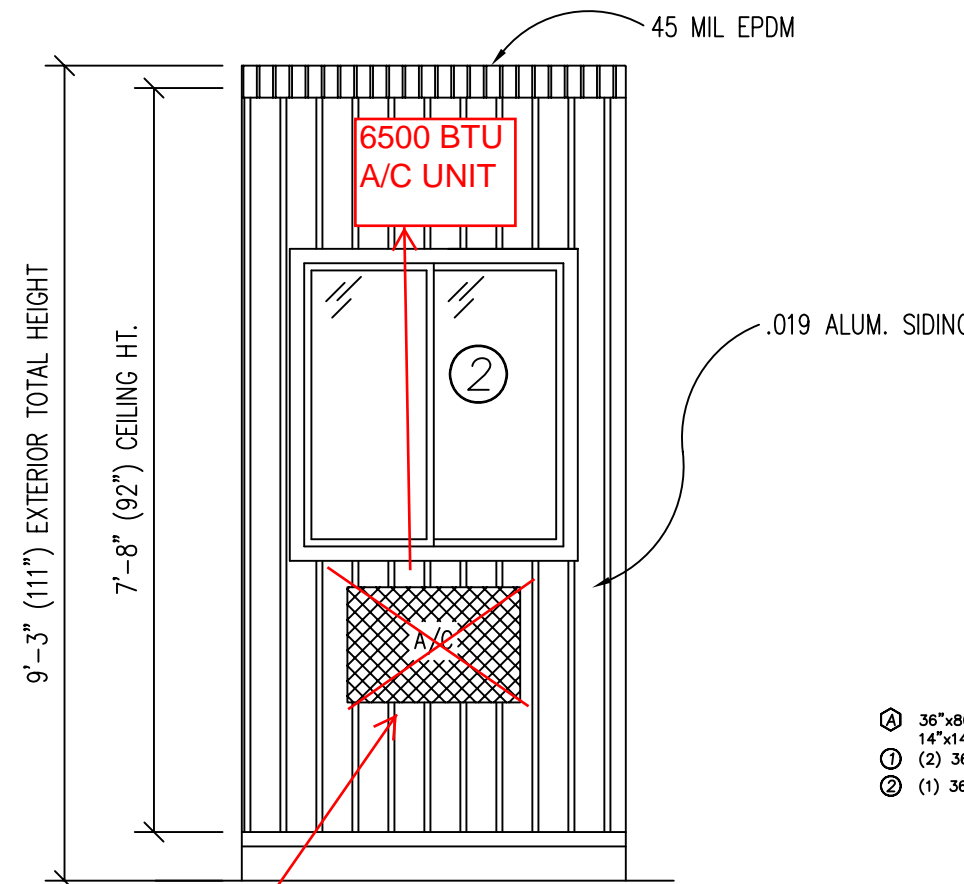
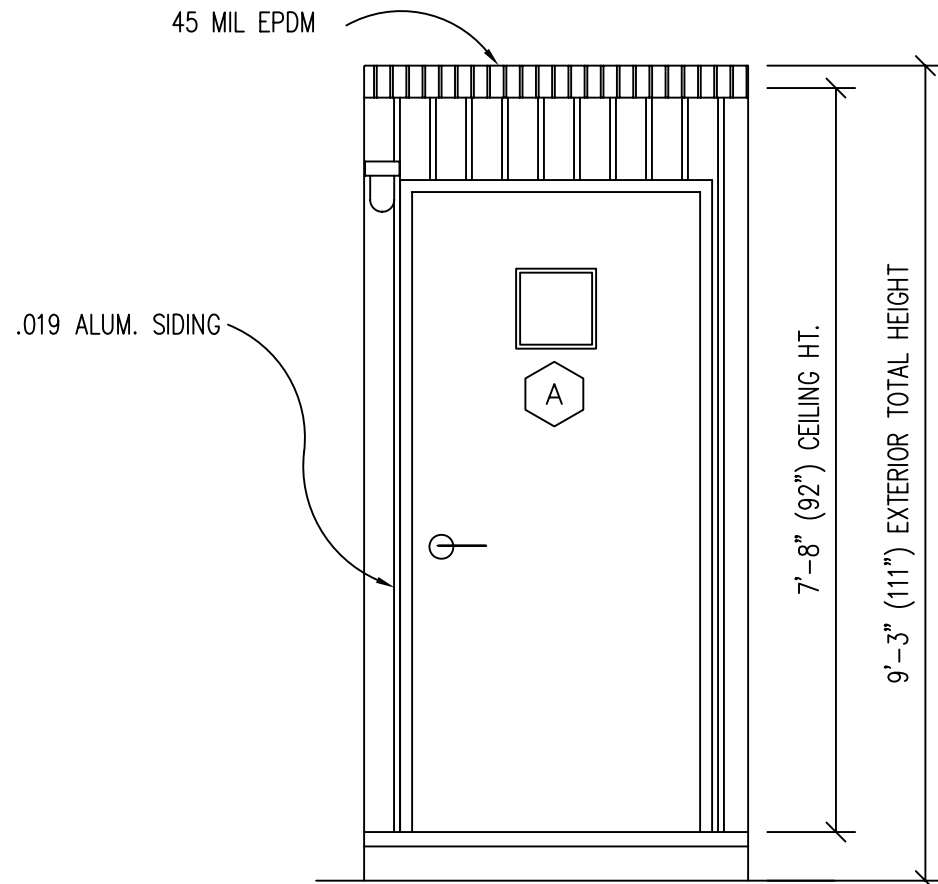
ROOF SHEATHING: 1/2" CDX PLYWOOD, 16/0 SPAN RATING

ROOF: .45 EPDM RUBBER ROOFING

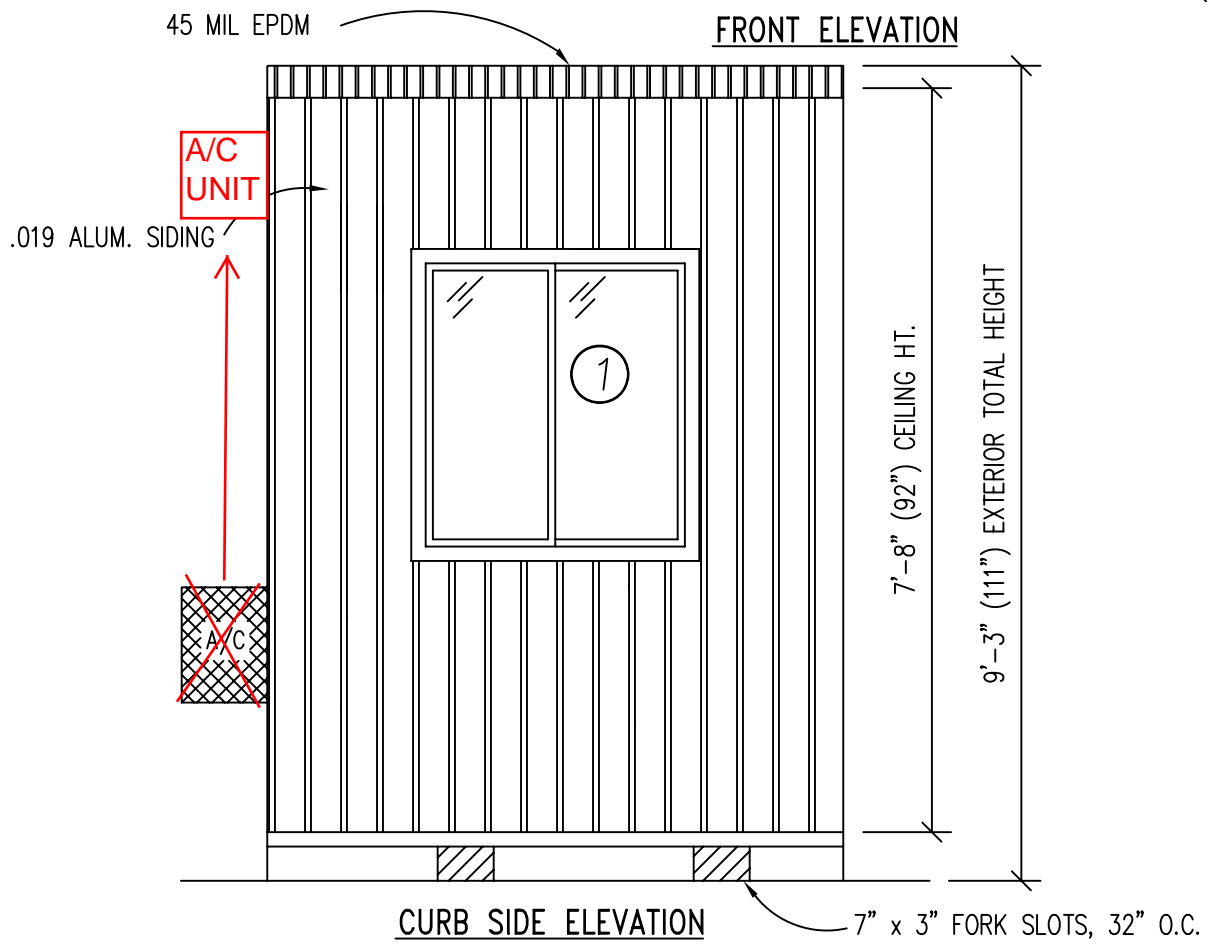
FURNISHINGS

COUNTER TOP - WHITE MICA

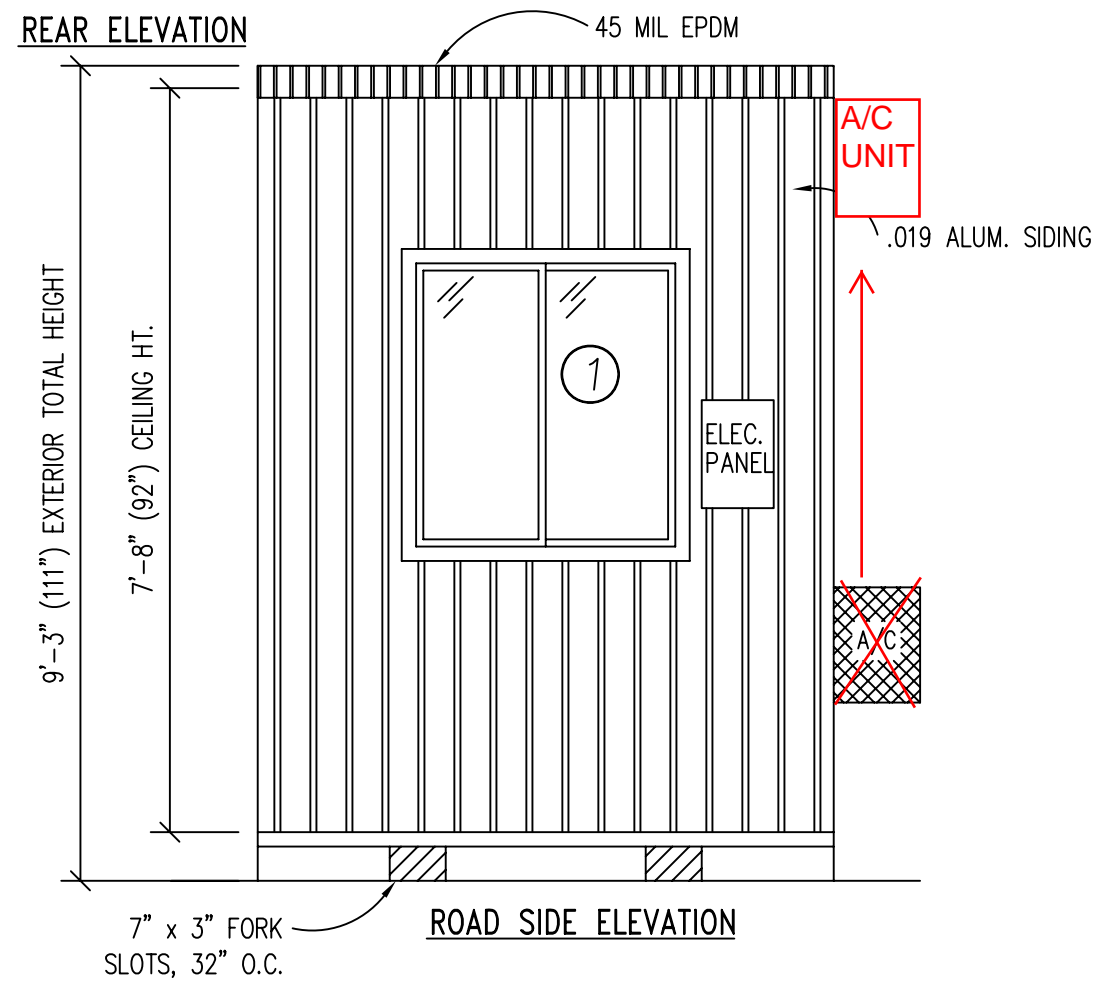
TITLE:	SPECIFICATIONS	DRAWN BY:	R.M.	DATE:	11/14/07	JOB NO:	2007-371
MODEL:	46 O/A GUARD BOOTH	REV:		SCALE:	NTS	DRAWING NO:	1
TWIN MODULAR SERVICES, INC.				1001 LOWER LANDING RD, SUITE 607, BLACKWOOD, NJ 08012			



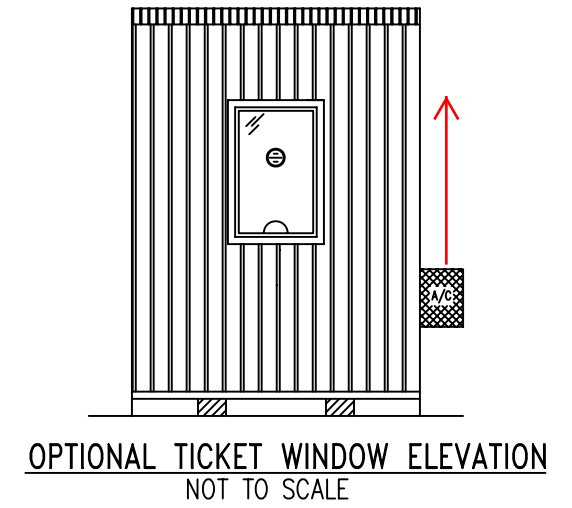
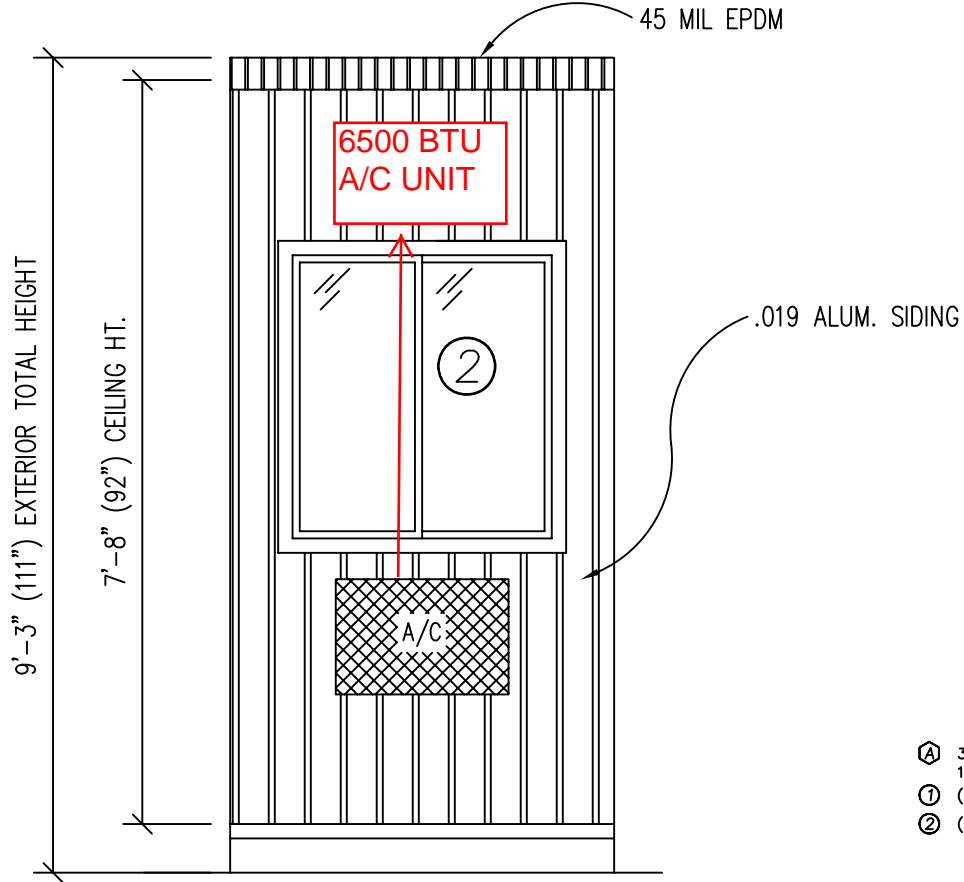
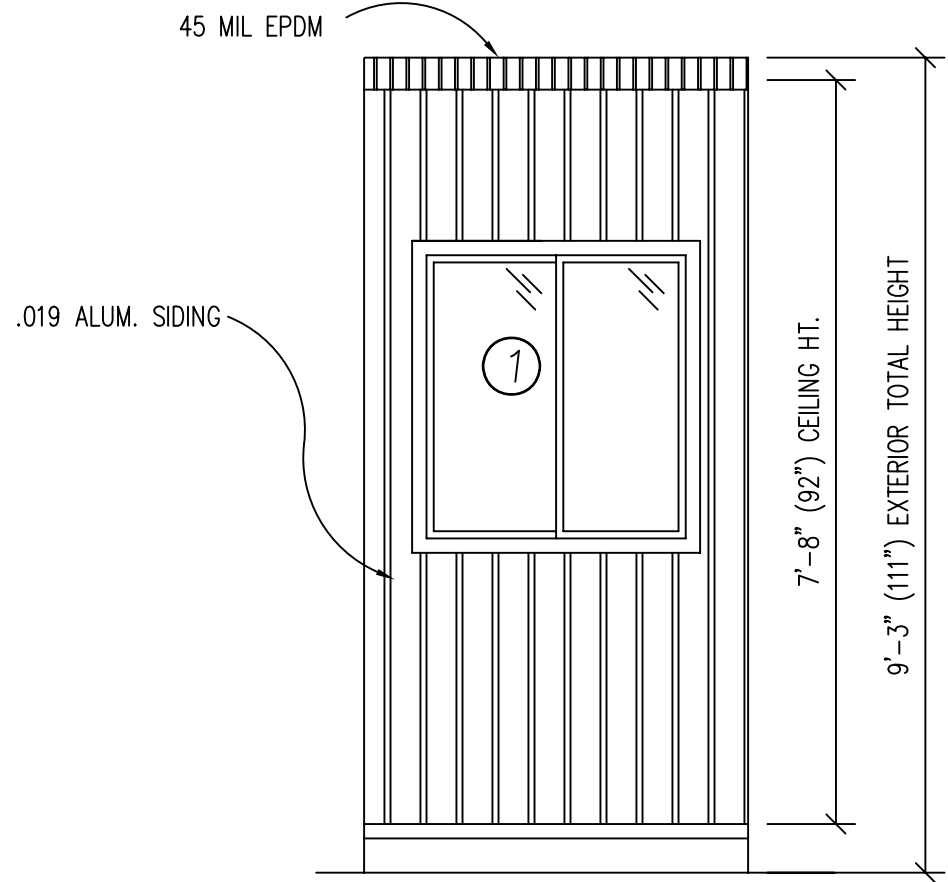
- DOOR AND WINDOW SCHEDULE**
- Ⓐ 36"x80" ALUM. DOOR, ALUM. FRAME, FOAM INSULATED W/ 14"x14" S.G., LEVER PASSAGE HARDWARE
 - ① (2) 36"x39" CLEAR TEMPERED GLASS - HORIZONTAL SLIDER, ALUM. MILL FRAME
 - ② (1) 36"x39" HORIZONTAL SLIDER, ALUM. MILL FRAME, SINGLE GLAZE



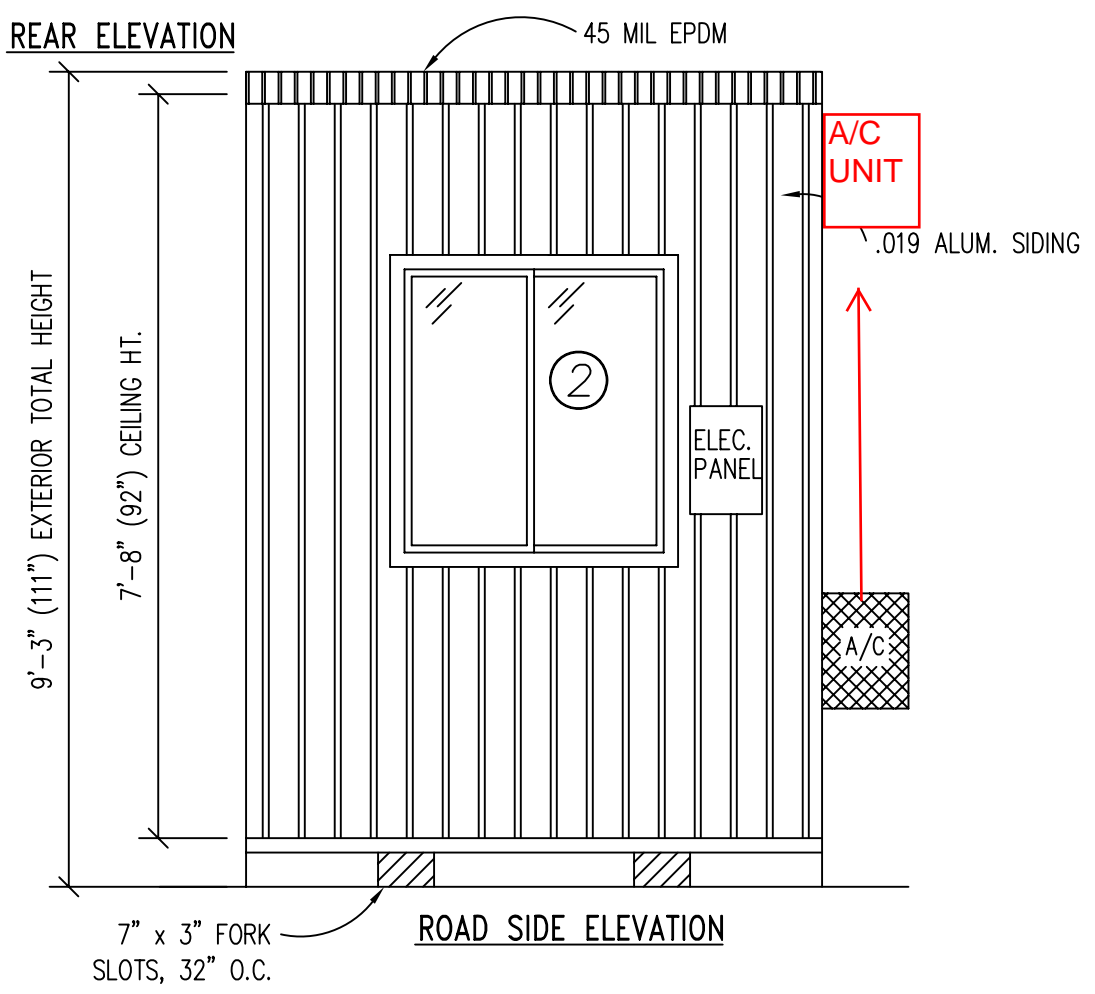
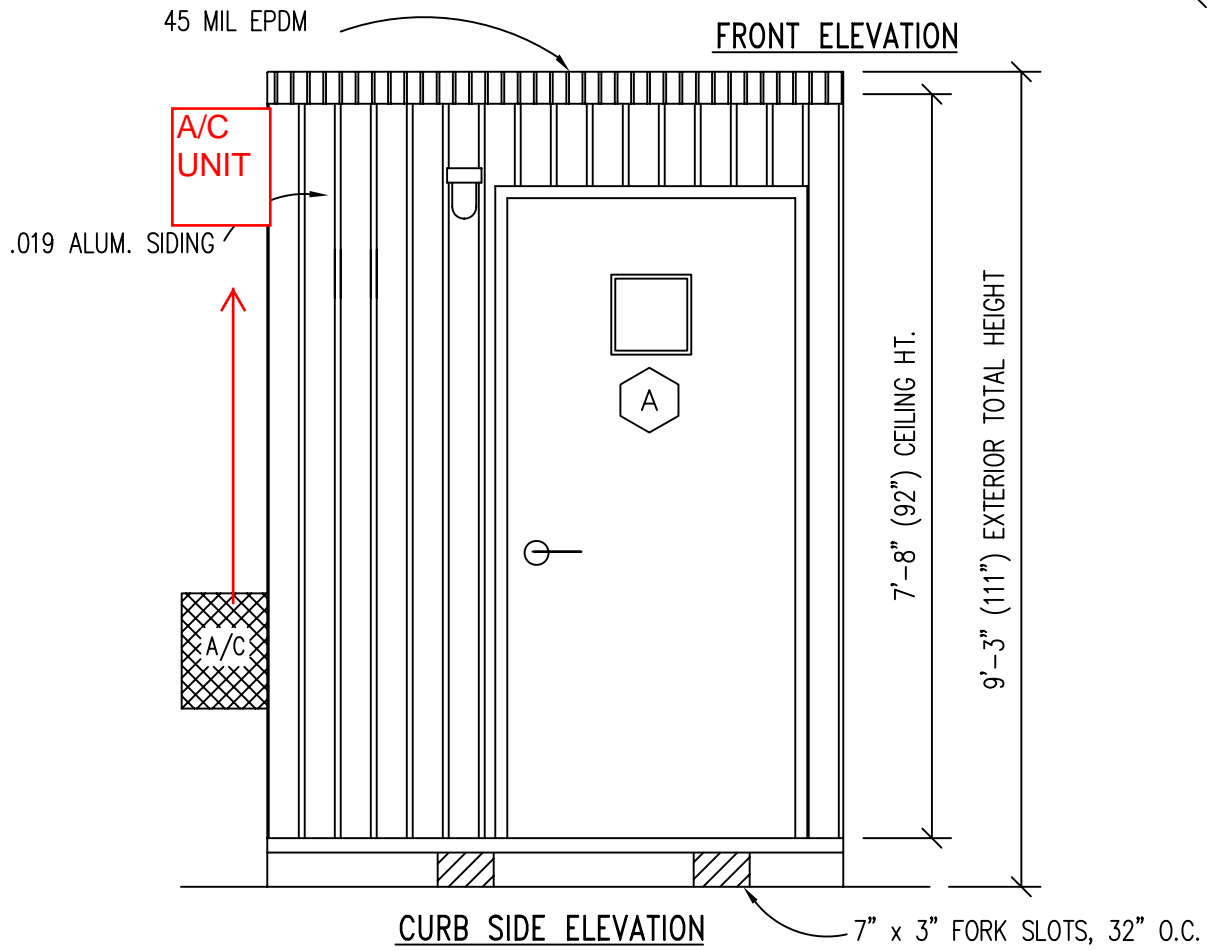
MOVE A/C UNIT TO ABOVE WINDOW



TITLE: ELEVATIONS (PLAN "A")	DRAWN BY: R.M.	TWIN MODULAR SERVICES, INC.	DATE: 11/14/07	JOB NO: 2007-371
MODEL: 46 O/A GUARD BOOTH	REV:	1001 LOWER LANDING RD, SUITE 607, BLACKWOOD, NJ 08012	SCALE: 1/4"=1'-0"	DRAWING NO: 2



- DOOR AND WINDOW SCHEDULE**
- Ⓐ 36"x80" ALUM. DOOR, ALUM. FRAME, FOAM INSULATED W/ 14"x14" S.G., LEVER PASSAGE HARDWARE
 - ① (2) 36"x39" CLEAR TEMPERED GLASS - HORIZONTAL SLIDER, ALUM. MILL FRAME
 - ② (1) 36"x39" HORIZONTAL SLIDER, ALUM. MILL FRAME, SINGLE GLAZE

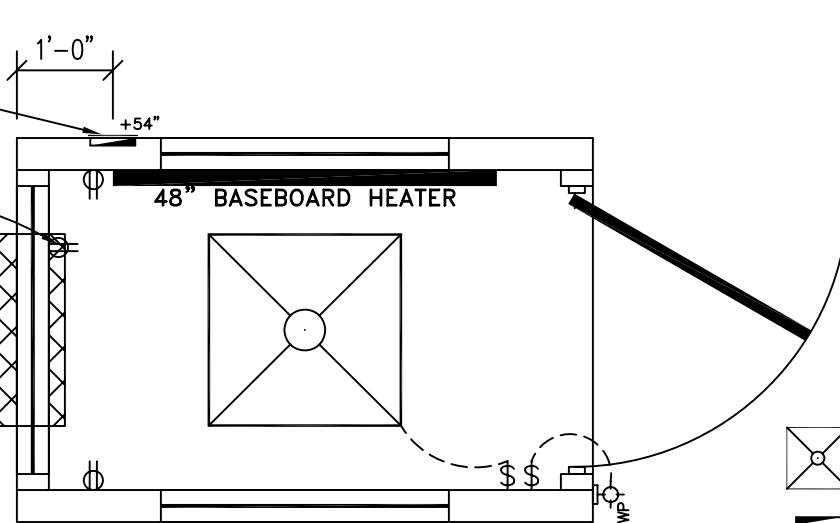


TITLE:	ELEVATIONS (PLAN "B")	DRAWN BY:	R.M.	DATE:	11/14/07	JOB NO.:	2007-371
MODEL:	46 O/A GUARD BOOTH	REV:		SCALE:	1/4"=1'-0"	DRAWING NO.:	3
				TWIN MODULAR SERVICES, INC.			
				1001 LOWER LANDING RD, SUITE 607, BLACKWOOD, NJ 08012			

SURFACE MOUNTED
100 AMP, EXTERIOR
ELEC. PANEL

DEDICATED RECEPT
FOR A/C

A/C MTD. ABOVE
WINDOW, 5000 BTU
WALL MOUNTED

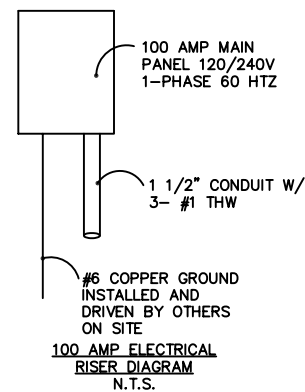


GUARDHOUSE PLAN "A"

CAPACITIES OF INSULATED CONDUCTORS 90°C WIRE COPPER	
AWG	MAXIMUM AMPACITY
14	15 AMP
12	20 AMP
10	30 AMP
8	50 AMP
6	65 AMP
4	85 AMP
3	100 AMP
2	115 AMP
1	130 AMP

ELECTRICAL LEGEND

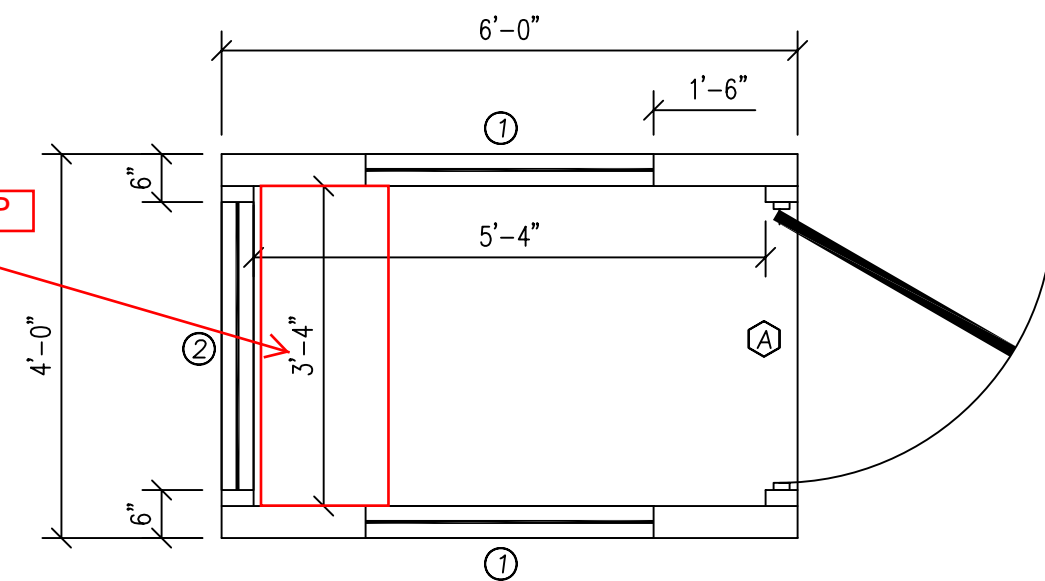
- 2'x2' (2) TUBE DROP-IN FLUORESCENT LIGHT
- 100A 120/240V MAIN PANEL, SURFACE MOUNTED EXTERIOR
- 15A 110V SINGLE POLE TOGGLE SWITCH +48"
- 15A 120V DUPLEX RECEPTACLE (RECEPTS AT +34" UNLESS NOTED)
- 150 WATT QUARTZ HALOGEN SECURITY LIGHT, WEATHERPROOF
- 48" ELECTRIC BASEBOARD HEATER



ELECTRICAL

1. ALL RECEPTACLES TO BE GROUNDING TYPE.
2. ALL WIRING TO BE PER THE EDITION OF THE NEC LISTED ON THE COVER PAGE, TYPE NM ROMEX (CU) W/ GROUND.
3. MAIN PANEL TO BE MARKED "SUITABLE FOR USE AS SERVICE EQUIPMENT", AND BE EQUIPPED W/ BREAKER/FUSE TYPE OVERCURRENT PROTECTION.
4. PROPER THERMAL OVERLOAD PROTECTION TO BE PROVIDED FOR ALL MOTORS.
5. DISCONNECTING MEANS WITHIN SIGHT REQUIRED FOR ALL MOTORS.
6. WEATHERPROOF PROTECTION REQUIRED FOR ALL OUTDOOR LIGHTS, RECEPTACLES AND DISCONNECTS.
7. PROPER WORKING CLEARANCES TO BE PROVIDED AND MAINTAINED ABOUT ALL ELECTRICAL EQUIPMENT.
8. ALL FLUORESCENT FIXTURES REQUIRE THERMAL PROTECTION AND PROPER CLEARANCES FROM INSULATION, ALSO APPLICABLE FOR INCANDESCENT FIXTURES.
9. COMBINATION EXHAUST FAN/LIGHT AND ALL RECESSED INCANDESCENT FIXTURES TO BE WITH THERMAL PROTECTION.
10. EXIT LIGHTS (IF ELECTRIC) MUST BE FED FROM AN APPROVED EMERGENCY SERVICE CONNECTED AHEAD OF, BUT NOT WITHIN MAIN SERVICE DISCONNECTION MEANS ENCLOSURE, AND INSTALLED AS PER SERVICE REQUIREMENTS, OR BE BATTERY BACKUP TYPE UNITS.
11. SERVICE CONDUCTORS, LOCATED WITHIN THE PERIMETER OF THE BUILDING, SHALL BE INSTALLED IN ACCORDANCE WITH ARTICLE 230-6, PER THE EDITION OF THE NEC LISTED ON THE COVER PAGE.
12. MAXIMUM 15 (2) TUBE FLOURESCENT LIGHTS ON 15A CIRCUIT, MAXIMUM 10 RECEPTS ON 15A CIRCUIT, MAXIMUM 7 (4) TUBE FLOURESCENT LIGHTS ON 20A CIRCUIT.
13. MAXIMUM 20 (2) TUBE FLOURESCENT LIGHTS ON 20A CIRCUIT, MAXIMUM 13 RECEPTS ON 20A CIRCUIT, MAXIMUM 10 (4) TUBE FLOURESCENT LIGHTS ON 20A CIRCUIT.

DESK TOP



GUARDHOUSE PLAN "A"

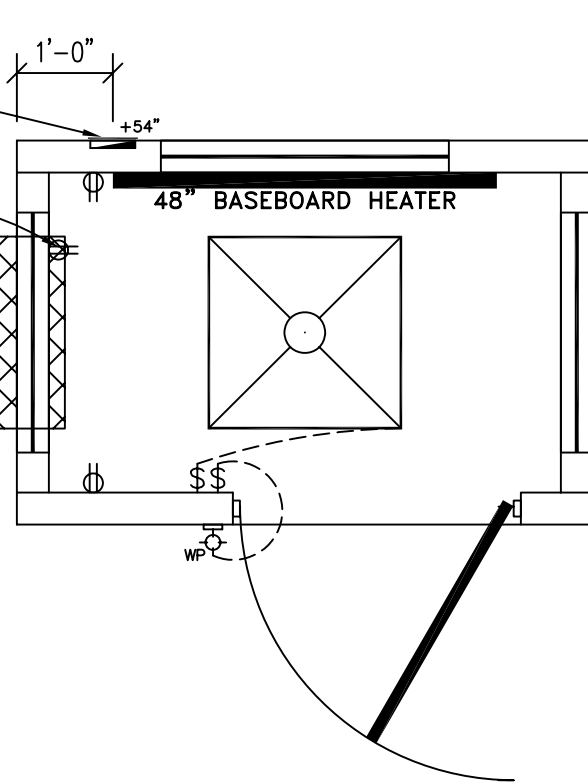
DOOR AND WINDOW SCHEDULE

- Ⓐ 36"x80" ALUM. DOOR, ALUM. FRAME, FOAM INSULATED W/ 14"x14" S.G., LEVER PASSAGE HARDWARE
- ① (2) 36"x39" CLEAR TEMPERED GLASS - HORIZONTAL SLIDER, ALUM. MILL FRAME
- ② (1) 36"x39" HORIZONTAL SLIDER, ALUM. MILL FRAME, SINGLE GLAZE

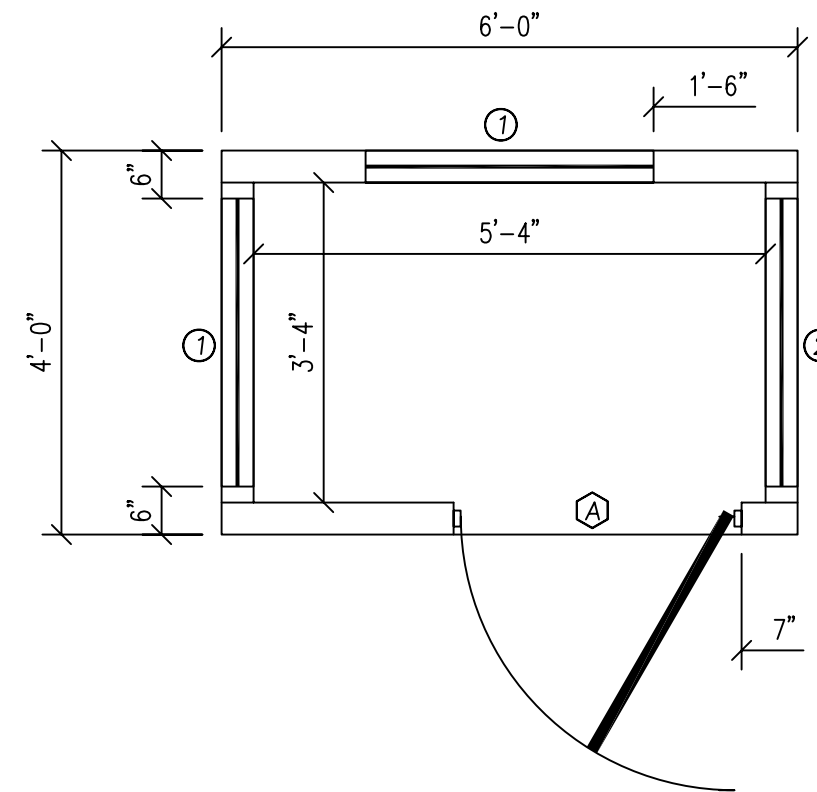
SURFACE MOUNTED
100 AMP, EXTERIOR
ELEC. PANEL

DEDICATED RECEPT
FOR A/C

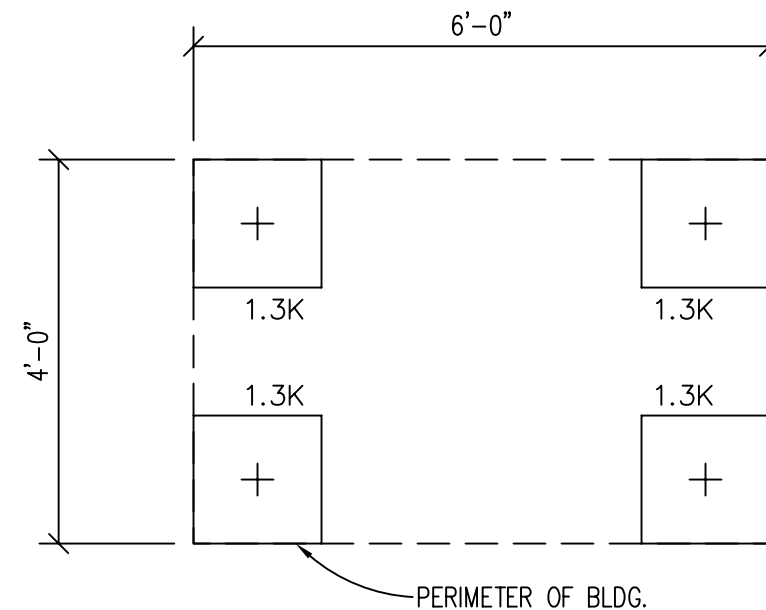
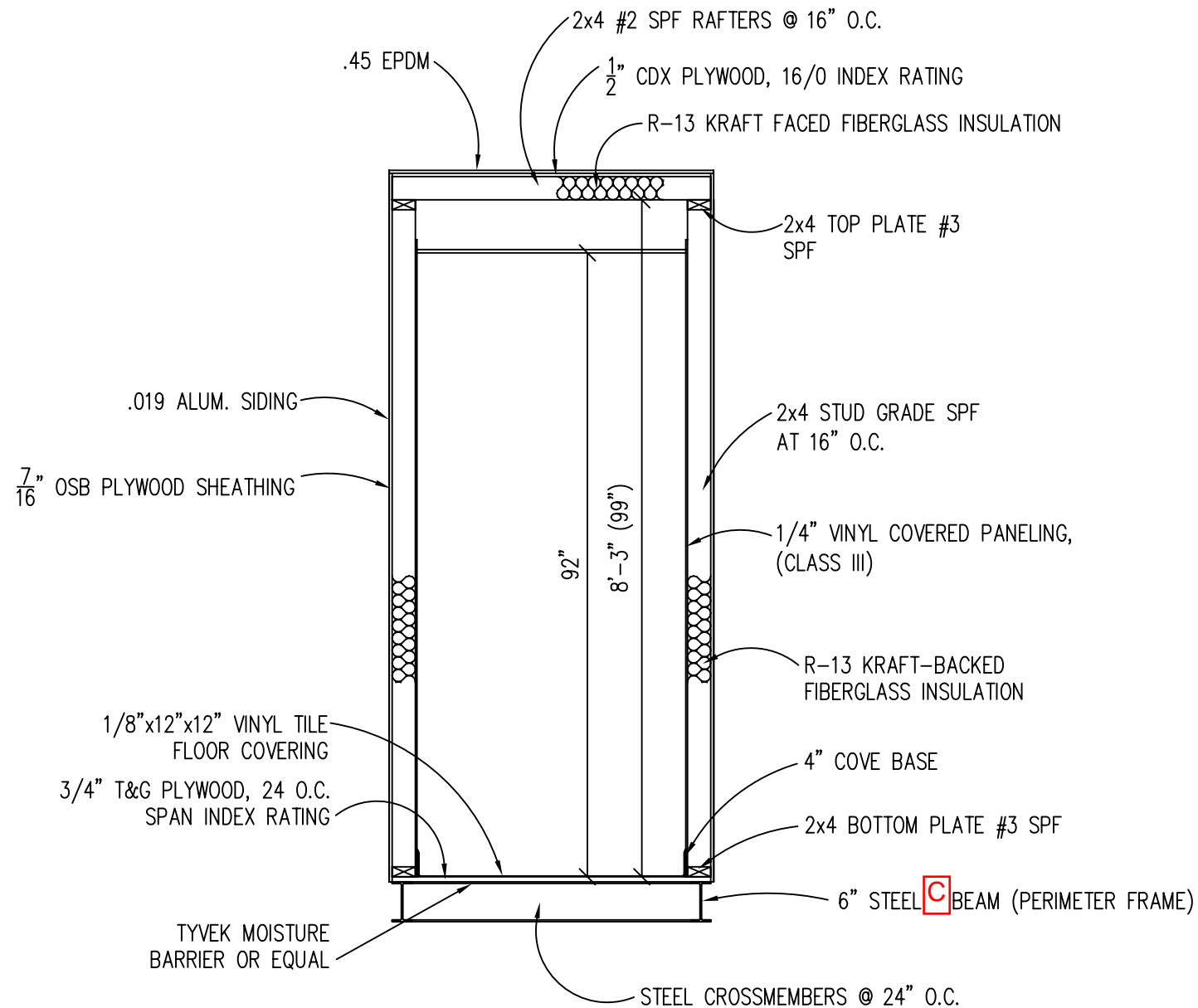
A/C MTD. ABOVE
WINDOW, 5000 BTU
WALL MOUNTED



GUARDHOUSE PLAN "B"



GUARDHOUSE PLAN "B"



FOUNDATION AND TIE-DOWN DESIGN BY OTHERS

DESIGN LOADS

FLOOR LIVE LOAD	= 50 PSF
FLOOR DEAD LOAD	= 10 PSF
ROOF LIVE LOAD	= 40 PSF
ROOF DEAD LOAD	= 10 PSF
EXTERIOR WALL DEAD LOAD	= 42 PLF

FOUNDATION LEGEND

	INDICATES BLOCKING TO BOTTOM OF MAIN I-BEAM
	INDICATES BLOCKING TO BOTTOM OF COLUMN
	INDICATES MINUTE-MAN OR EQUAL FRAME TIE-DOWN LOCATION AND DIRECTION

FOUNDATION

1. THE PIER LOCATIONS SHOWN ON THIS PLAN ARE FOR THE PURPOSE OF IDENTIFYING THE LOCATION OF THE REQUIRED BLOCKING POINTS AND THE LOADS APPLIED AT EACH POINT FOR THIS BUILDING. FOUNDATION REQUIREMENTS ARE NOT KNOWN DUE TO VARYING SOIL CONDITIONS.
2. FOUNDATION DESIGN IS BY OTHERS. FOUNDATION REVIEW AND APPROVAL IS TO BE PERFORMED BY THE LOCAL OFFICIAL HAVING JURISDICTION.
3. CRAWL SPACE TO BE VENTILATED AT 1 SQ. FT. PER EACH 150 SQ. FT. OF CRAWL SPACE AREA TO BE VENTILATED.
4. PROVIDE POSITIVE DRAINAGE UNDER UNIT.
5. PROVIDE MINIMUM CRAWL SPACE ACCESS OF 22" x 24".
6. PIER LOADS ARE SHOWN IN KIPS

BUILDING CODE

1. ATTIC VENTILATION SHALL NOT BE LESS THAN 1/150th OF THE HORIZONTAL AREA TO BE VENTILATED.
2. THE BUILDING EXTERIOR AND ALL FACILITIES WITHIN THE BUILDING SHALL BE IDENTIFIED WITH THE INTERNATIONAL SYMBOL OF ACCESSIBILITY.
3. OWNER/BUYER SHALL BE RESPONSIBLE FOR ON SITE BARRIER FREE PROVISIONS: STEPS, RAMPS, PARKING SIGNS, ETC. - BUILDING APPROACH (WALK OR RAMP) WITH A MINIMUM WIDTH OF 5' AND A GRADIENT OF NOT MORE THAN 1 FOOT IN 20 FEET.
4. ALL LOCKS TO BE UNLOCKABLE FROM THE INTERIOR WITHOUT THE USE OF A KEY OR SPECIAL KNOWLEDGE.
5. CORROSION RESISTANT FLASHING AT TOP AND SIDES OF DOORS, WINDOWS AND AT ROOF PENETRATIONS.
6. ALL GLAZING WITHIN 24" OF EXTERIOR PASSAGE DOORS AND IN PASSAGE DOORS, OR WITHIN 18" OF FLOOR TO BE "SAFETY GLAZED" AND SO MARKED.

TITLE: BLOCKING POINTS PLAN CROSS SECTION	DATE: 11/14/07	JOB NO: 2007-371
MODEL: 46 0/A GUARD BOOTH	SCALE: 1/4"=1'-0"	DRAWING NO: 5
DRAWN BY: R.M.	TWIN MODULAR SERVICES, INC.	
REV:	1001 LOWER LANDING RD, SUITE 607, BLACKWOOD, NJ 08012	